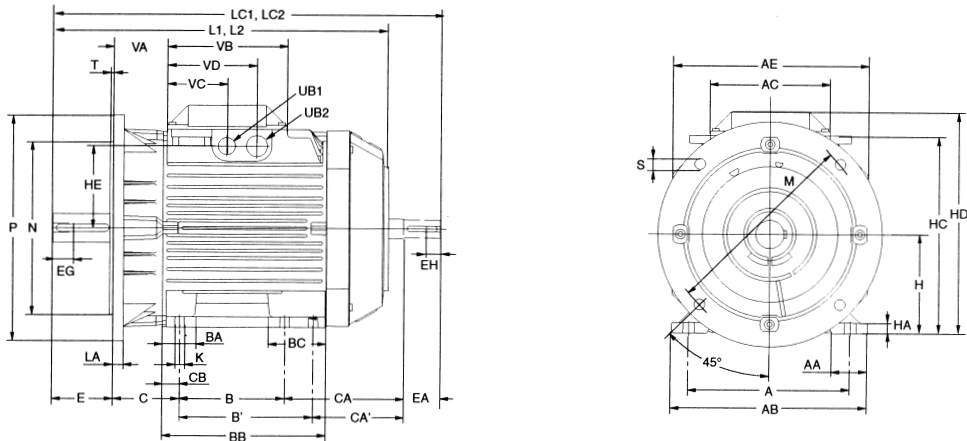




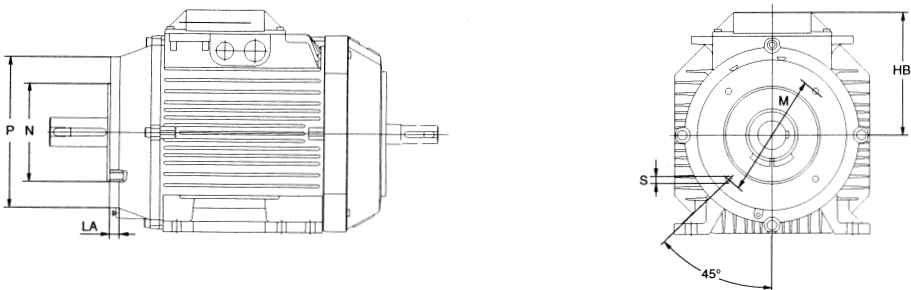
# M2AA 112, 132

## Basic design

Foot- and flange-mounted motor, IM 2001, IM 2002, IM B 35, large flange



Foot- and flange-mounted motor, IM 2101, IM 2102, IM B 34, small flange



### IM 2001, IM 2002, IM B 35

Type	M2AA	A <sup>1)</sup>	AA	AB	AC	AE	B <sup>1)</sup>	B' <sup>1)</sup>	BA	BB	BC	C <sup>1)</sup>	CA' <sup>1) 4)</sup>	CA <sup>1) 5)</sup>	CB	D <sup>1)</sup>	DA <sup>1)</sup>	DB	DC	E <sup>2)</sup>	EA	EG	EH	F <sup>1)</sup>	FA <sup>1)</sup>	G
112 M	190	41	222	221	160	140	-	31	168	31	70	111.5	138	14	28	19	M10	M8	60	40	22	19	8	6	24	
132 S	216	47	262	261	160	140	178 <sup>8)</sup>	40	212	76	89	158	191	18	38	24	M12	M8	80	50	28	19	10	8	33	
132 M	216	47	262	261	160	140 <sup>8)</sup>	178	40	212	76	89	120	153	18	38	24	M12	M8	80	50	28	19	10	8	33	

Type	M2AA	GA	GB	GC	H <sup>1)</sup>	HA	HC	HD	HE	K	L <sup>1) 4)</sup>	L <sup>2) 5)</sup>	LC1 <sup>4)</sup>	LC2 <sup>5)</sup>	UB1 <sup>3)</sup>	UB2 <sup>3)</sup>	VA	VB	VC <sup>6)</sup>	VD1 <sup>7)</sup>	VD2 <sup>7)</sup>
112 M	31	15.5	21.5	112	12	226	258	92	12	361	388	421.5	448	Pr 22.5, Pg 16	Pr 28.3, Pg 21	60	160	80	120	40	
132 S	41	20	27	132	14	263.5	295.5	109.5	12	447	447	517	517	Pr 22.5, Pg 16	Pr 28.3, Pg 21	71	160	80	120	40	
132 M	41	20	27	132	14	263.5	295.5	109.5	12	447	481.5	517	550	Pr 22.5, Pg 16	Pr 28.3, Pg 21	71	160	80	120	40	

### IM 2001, IM B 35

Type	M2AA	HB	LA	M	N <sup>1)</sup>	P	S	T
112	146	11	215	180	250	14.5	4	
132	163.5	14	265	230	300	14.5	4	

### IM 2101, IM B 34

Type	M2AA	HB	LA	M	N <sup>1)</sup>	P	S	T
112	146	20	130	110	160	M8	3.5	
132	163.5	18	165	130	200	M10	3.5	

1) Tolerances  
A, B ISO js14  
C, CA +0 -2  
D28 ISO j6  
D38 ISO k6  
DA ISO j6  
F, FA ISO h9  
H +0 -0.5  
N ISO j6

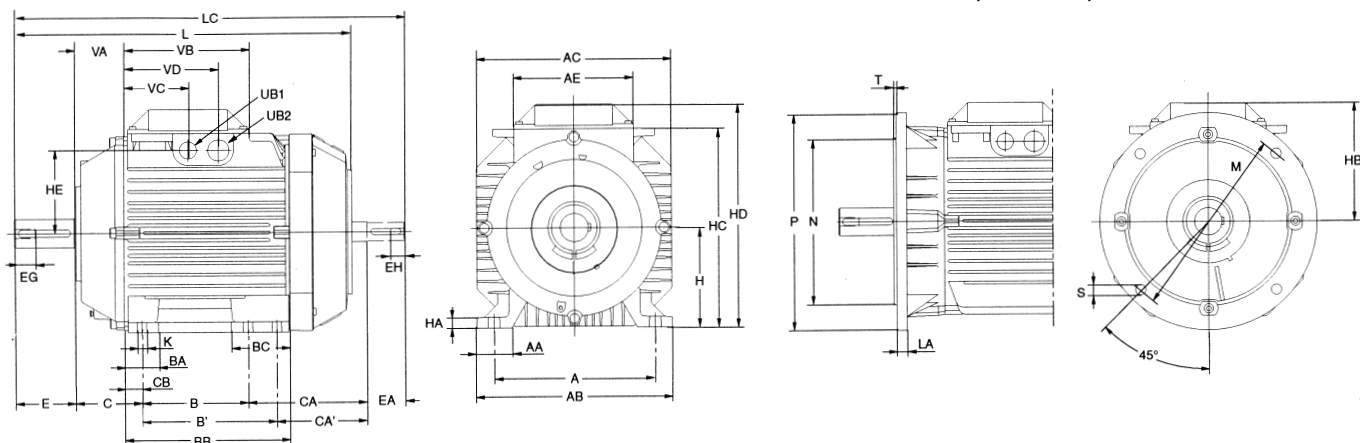
2) Shoulder of shaft extension and contact surface of flange are in the same plan.  
3) Knockout openings.  
4) Single-speed motors and two-speed motors 132 S.  
For variant code 053 and 097 the dimension L1 and L2 is increased by 7.5 mm for the frame size 112 and 5.5 mm for the frame size 132.  
5) Two-speed motors, 132 S not included.  
6) Dimension to UB1.  
7) Dimension to UB2 (VD1 = right side, VD2 = left side) as viewed from the D-end.  
8) Not acc. to IEC.

# M2AA 112, 132

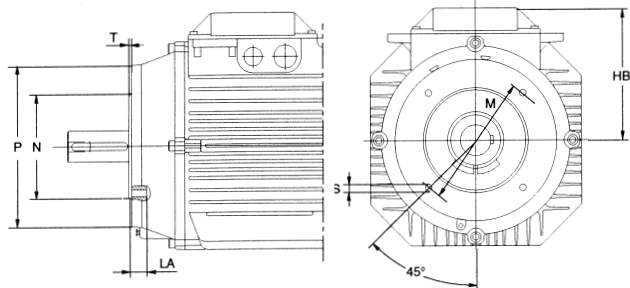
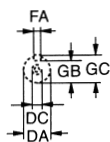
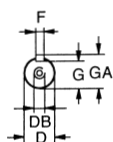
## High-output design

### Foot-mounted motor IM 1001, IM 1002, IM B 3

### Flange-mounted motor, large flange IM 3001, IM 3002, IM B 5



### Flange-mounted motor, small flange IM 3601, IM 3602, IM B 14



### IM 1001, IM 1002, IM B 3

Type	M2AA	A <sup>1)</sup>	AA	AB	AC	AE	B <sup>1)</sup>	B' <sup>1)</sup>	BA	BB	BC	C <sup>1)</sup>	CA' <sup>1)</sup>	CA <sup>1)</sup>	CB	D <sup>1)</sup>	DA <sup>1)</sup>	DB	DC	E <sup>2)</sup>	EA	EG	EH	F <sup>1)</sup>	FA <sup>1)</sup>	G	GA
112 M	190	41	222	221	160	140	-	31	168	31	70	-	138	14	28	19	M10	M8	60	40	22	19	8	6	24	31	
132 S	216	47	262	261	160	140	178 <sup>6)</sup>	40	212	76	89	153	191	18	38	24	M12	M8	80	50	28	19	10	8	33	41	
132 M	216	47	262	261	160	140 <sup>6)</sup>	178	40	212	76	89	153	191	18	38	24	M12	M8	80	50	28	19	10	8	33	41	

Type	M2AA	GB	GC	H <sup>1)</sup>	HA	HC	HD	HE	K	L <sup>7)</sup>	LC	UB1 <sup>3)</sup>	UB2 <sup>3)</sup>	VA	VB	VC <sup>4)</sup>	VD1 <sup>5)</sup>	VD2 <sup>5)</sup>
112 M	15.5	21.5	112	12	226	258	92	12	388	448	Pr 22.5, Pg 16	Pr 28.3, Pg 21	60	160	80	120	40	
132 S	20	27	132	14	263.5	295.5	109.5	12	481.5	550	Pr 22.5, Pg 16	Pr 28.3, Pg 21	71	160	80	120	40	
132 M	20	27	132	14	263.5	295.5	109.5	12	481.5	550	Pr 22.5, Pg 16	Pr 28.3, Pg 21	71	160	80	120	40	

### IM 3001, IM B 5

Type	M2AA	HB	LA	M	N <sup>1)</sup>	P	S	T
112	146	11	215	180	250	14.5	4	
132	163.5	14	265	230	300	14.5	4	

### IM 3601, IM B 14

Type	M2AA	HB	LA	M	N <sup>1)</sup>	P	S	T
112	146	20	130	110	160	M8	3.5	
132	163.5	18	165	130	200	M10	3.5	

#### 1) Tolerances

- A, B ISO js14
- C, CA +0 -2
- D28 ISO j6
- D38 ISO k6
- DA ISO j6
- F, FA ISO h9
- H +0 -0.5
- N ISO j6

#### 2) Shoulder of shaft extension and contact surface of flange are in the same plane.

#### 3) Four knockout openings.

#### 4) Dimension to UB1.

#### 5) Dimension to UB2 (VD1 = right side, VD2 = left side) as viewed from the D-end.

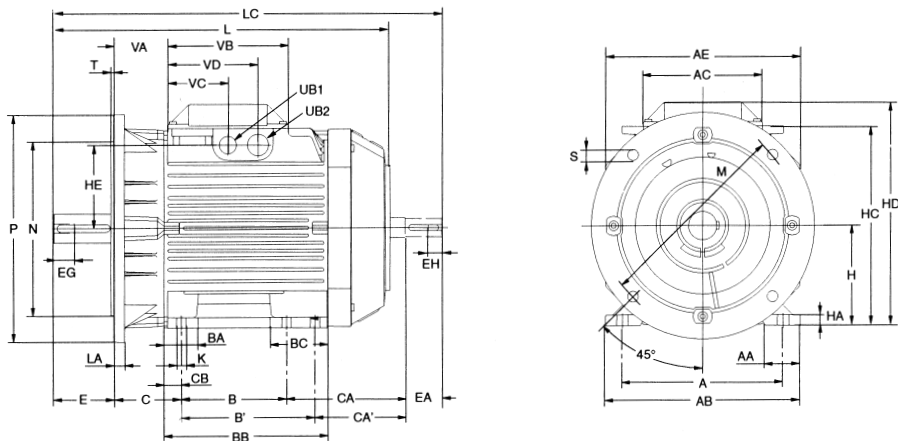
#### 6) Not acc. to IEC.

#### 7) For variant code 053 and 097 the dimension L is increased by 7.5 mm for the frame size 112 and 5.5 mm for the frame size 132.

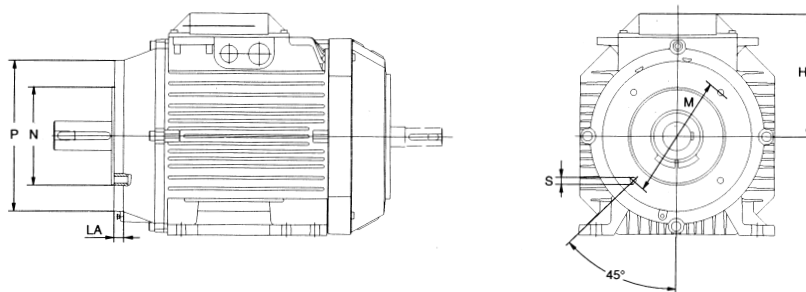
# M2AA 112, 132

## High-output design

Foot-mounted and flange-mounted motor, IM 2001, IM 2002, IM B 35, large flange



Foot-mounted and flange-mounted motor, IM 2101, IM 2102, IM B 34, small flange



### IM 2001, IM 2002, IM B 35

Type	M2AA	A <sup>1)</sup>	AA	AB	AC	AE	B <sup>1)</sup>	B' <sup>1)</sup>	BA	BB	BC	C <sup>1)7)</sup>	CA' <sup>1)7)</sup>	CA <sup>1)</sup>	CB	D <sup>1)</sup>	DA <sup>1)</sup>	DB	DC	E <sup>2)</sup>	EA	EG	EH	F <sup>1)</sup>	FA <sup>1)</sup>	G
112 M	190	41	222	221	160	140	-	31	168	31	70	-	138	14	28	19	M10	M8	60	40	22	19	8	6	24	
132 S	216	47	262	261	160	140	178 <sup>6)</sup>	40	212	76	89	153	191	18	38	24	M12	M8	80	50	28	19	10	8	33	
132 M	216	47	262	261	160	140 <sup>6)</sup>	178	40	212	76	89	153	191	18	38	24	M12	M8	80	50	28	19	10	8	33	

Type	M2AA	GA	GB	GC	H <sup>1)</sup>	HA	HC	HD	HE	K	L <sup>7)</sup>	LC	UB1 <sup>3)</sup>	UB2 <sup>3)</sup>	VA	VB	VC <sup>4)</sup>	VD1 <sup>5)</sup>	VD2 <sup>5)</sup>
112 M	31	15.5	21.5	112	12	226	258	92	12	388	448	Pr 22.5, Pg 16	Pr 28.3, Pg 21	60	160	80	120	40	
132 S	41	20	27	132	14	263.5	295.5	109.5	12	481.5	550	Pr 22.5, Pg 16	Pr 28.3, Pg 21	71	160	80	120	40	
132 M	41	20	27	132	14	263.5	295.5	109.5	12	481.5	550	Pr 22.5, Pg 16	Pr 28.3, Pg 21	71	160	80	120	40	

### IM 2001, IM B 35

Type	M2AA	HB	LA	M	N <sup>1)</sup>	P	S	T
112	146	11	215	180	250	14.5	4	
132	163.5	14	265	230	300	14.5	4	

### IM 2101, IM B 34

Type	M2AA	HB	LA	M	N <sup>1)</sup>	P	S	T
112	146	20	130	110	160	M8	3.5	
132	163.5	18	165	130	200	M10	3.5	

<sup>1)</sup> Tolerances  
A, B ISO js14  
C, CA +0 -2  
D28 ISO j6  
D38 ISO k6  
DA ISO j6  
F, FA ISO h9  
H +0 -0.5  
N ISO j6

<sup>2)</sup> Shoulder of shaft extension and contact surface of flange are in the same plan.  
<sup>3)</sup> Knockout openings.  
<sup>4)</sup> Dimension to UB1.  
<sup>5)</sup> Dimension to UB2 (VD1 = right side, VD2 = left side) as viewed from the D-end.  
<sup>6)</sup> Not acc. to IEC.  
<sup>7)</sup> For variant code 053 and 097 the dimension L is increased by 7.5 mm for the frame size 112 and 5.5 mm for the frame size 132.