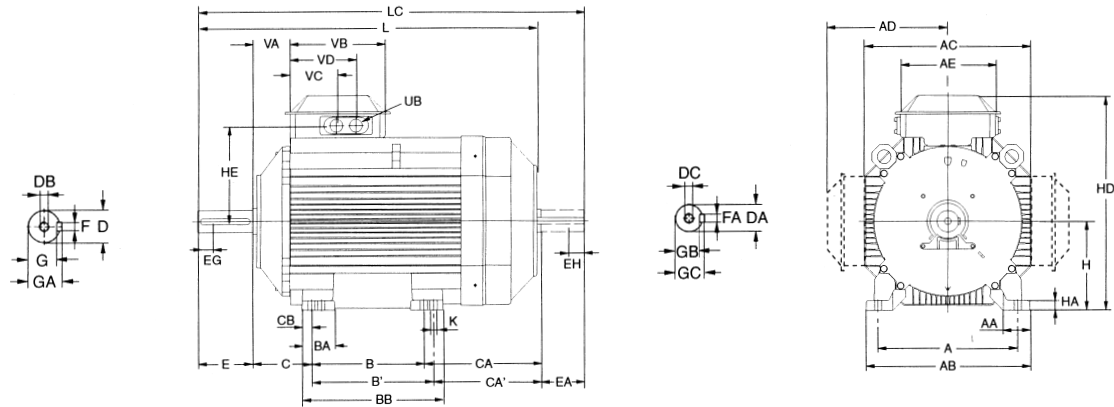


M2AA 200-250

Basic design

Foot-mounted motor IM 1001, IM 1002, IM B 3



Dimension AD and HD refer to side mounted terminal box, see page 52.

IM 1001, IM 1002, IM B 3

Type M2AA	IEC-size	No. of poles	A ¹⁾	AA	AB	AC	AE	B ¹⁾	B ¹⁾	BA	BB	C ¹⁾	CA ¹⁾	CA ¹⁾	CB	D ¹⁾	DA ¹⁾	DB	DC	E	EA	EG	EH
200 ML.	200 M	2-8	318	64	380	386	243	267	305 ⁵⁾	98	365	133	273	235	30	55	45	M20	M16	110	110	42	36
200 ML.	200 L	2-8	318	64	380	386	243	267 ⁵⁾	305	98	365	133	273	235	30	55	45	M20	M16	110	110	42	36
225 SM.	225 S	4, 8	356	69	418	425	243	286	311 ⁵⁾	84	360	149	300	275	24.5	60	55	M20	M20	140	110	42	42
225 SM.	225 M	2, 2/4	356	69	418	425	243	286 ⁵⁾	311	84	360	149	300	275	24.5	55	55	M20	M20	110	110	42	42
225 SM.	225 M	4-8	356	69	418	425	243	286 ⁵⁾	311	84	360	149	300	275	24.5	60	55	M20	M20	140	110	42	42
250 SM.	250 S	2	406	78	474	471	243	311	349 ⁵⁾	94.5	409	168	263	225	40	60	55	M20	M20	140	110	42	42
250 SM.	250 S	4-8	406	78	474	471	243	311	349 ⁵⁾	94.5	409	168	263	225	30	65	55	M20	M20	140	110	42	42
250 SM.	250 M	2, 2/4	406	78	474	471	243	311 ⁵⁾	349	94.5	409	168	263	225	40	60	55	M20	M20	140	110	42	42
250 SM.	250 M	4-8	406	78	474	471	243	311 ⁵⁾	349	94.5	409	168	263	225	30	65	55	M20	M20	140	110	42	42

Type M2AA	IEC-size	No. of poles	F ¹⁾	FA ¹⁾	G	GA	GB	GC	H ¹⁾	HA	HD	HE	K	L	LC	UB ²⁾	VA	VB	VC ³⁾	VC ⁴⁾	VD ³⁾	VD ⁴⁾
200 ML.	200 M	2-8	16	16	49	59	39	49	200	25	500.5	224	18	774	893	2 x FL 13	75.5	243	118	89.5	168	163.5
200 ML.	200 L	2-8	16	16	49	59	39	49	200	25	500.5	224	18	774	893	2 x FL 13	75.5	243	118	89.5	168	163.5
225 SM.	225 S	4, 8	18	16	53	64	49	59	225	25	546	244.5	18	866	985	2 x FL 13	93.5	243	118	89.5	168	163.5
225 SM.	225 M	2, 2/4	16	16	49	59	49	59	225	25	546	244.5	18	836	955	2 x FL 13	93.5	243	118	89.5	168	163.5
225 SM.	225 M	4-8	18	16	53	64	49	59	225	25	546	244.5	18	866	985	2 x FL 13	93.5	243	118	89.5	168	163.5
250 SM.	250 S	2	18	16	53	64	49	59	250	40	594	267.5	22	875	992	2 x FL 13	93.5	243	118	89.5	168	163.5
250 SM.	250 S	4-8	18	16	58	69	49	59	250	30	594	267.5	22	875	992	2 x FL 13	93.5	243	118	89.5	168	163.5
250 SM.	250 M	2	18	16	53	64	49	59	250	40	594	267.5	22	875	992	2 x FL 13	93.5	243	118	89.5	168	163.5
250 SM.	250 M	2/4	18	16	53	64	49	59	250	30	594	267.5	22	875	992	2 x FL 13	93.5	243	118	89.5	168	163.5
250 SM.	250 M	4-8	18	16	58	69	49	59	250	30	594	267.5	22	875	992	2 x FL 13	93.5	243	118	89.5	168	163.5

¹⁾ Tolerances

- A, B ISO js14
- C, CA +0 -2
- DA 45-55 ISO k6
- D 55-65 ISO m6
- F, FA ISO h9
- H +0 -0.5

²⁾ Flange opening is provided with pipe flange FL 13, with tapped lead-in holes plugged with sealing plugs.

Single- and two-speed motors: 2 x Pr 37, 2 x Pg 29

Motors for 230 V 50 Hz have pipe flange FL 21 and 2 x Pr 54, 2 x Pg 42.

³⁾ For flange opening FL 13: 2 x Pr 37, 2 x Pg 29

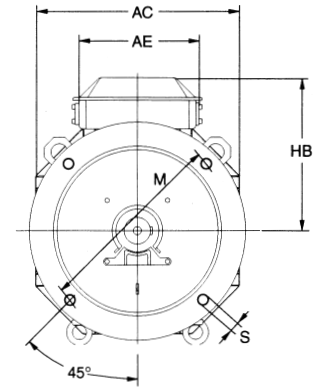
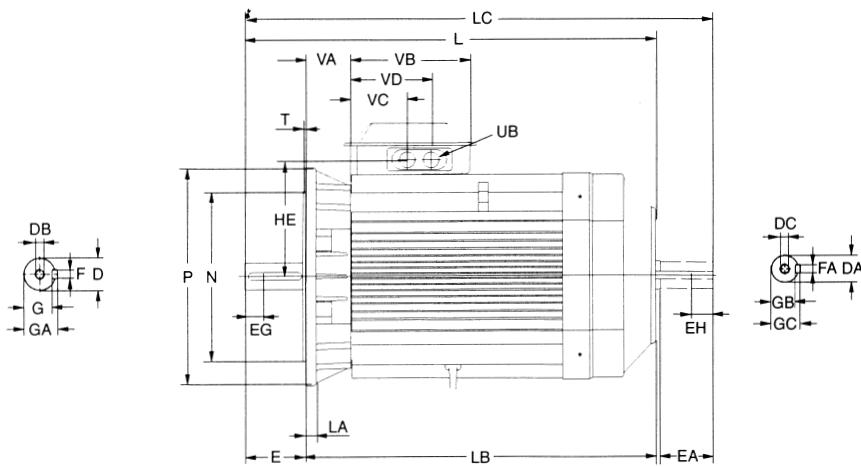
⁴⁾ For extra large terminal box with flange opening FL 21: 2 x Pr 54, 2 x Pg 42.

⁵⁾ Not acc. to IEC.

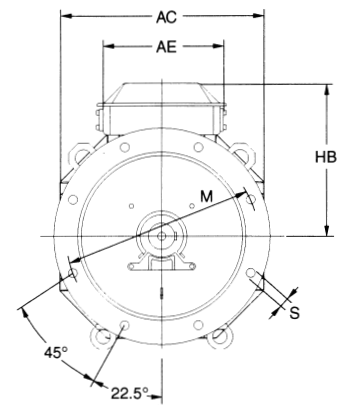
M2AA 200-250

Basic design

Flange-mounted motor IM 3001, IM 3002, IM B 5



M2AA 200



M2AA 225-250

IM 3001, IM 3002, IM B 5

Type M2AA	IEC-size	No. of poles	AC	AE	D ¹⁾	DA ¹⁾	DB	DC	E ²⁾	EA	EG	EH	F ¹⁾	FA	G	GA	GB	GC	HB	HE
200 ML.	200 M	2-8	386	243	55	45	M20	M16	110	110	42	36	16	16	49	59	39	49	300.5	224
200 ML.	200 L	2-8	386	243	55	45	M20	M16	110	110	42	36	16	16	49	59	39	49	300.5	224
225 SM.	225 S	4, 8	427	243	60	55	M20	M20	140	110	42	42	18	16	53	64	49	59	321	244.5
225 SM.	225 M	2, 2/4	427	243	55	55	M20	M20	110	110	42	42	16	16	49	59	49	59	321	244.5
225 SM.	225 M	4-8	427	243	60	55	M20	M20	140	110	42	42	18	16	53	64	49	59	321	244.5
250 SM.	250 S	2	471	243	60	55	M20	M20	140	110	42	42	18	16	53	64	49	59	344	267.5
250 SM.	250 S	4-8	471	243	65	55	M20	M20	140	110	42	42	18	16	58	69	49	59	344	267.5
250 SM.	250 M	2, 2/4	471	243	60	55	M20	M20	140	110	42	42	18	16	53	64	49	59	344	267.5
250 SM.	250 M	4-8	471	243	65	55	M20	M20	140	110	42	42	18	16	58	69	49	59	344	267.5

Type M2AA	IEC-size	No. of poles	L	LA	LB	LC	M	N ¹⁾	P	S	T	UB ³⁾	VA	VB	VC ⁴⁾	VC ⁵⁾	VD ⁴⁾	VD ⁵⁾
200 ML.	200 M	2-8	774	20	664	893	350	300	400	19	5	2 x FL 13	75.5	243	118	89.5	168	163.5
200 ML.	200 L	2-8	774	20	664	893	350	300	400	19	5	2 x FL 13	75.5	243	118	89.5	168	163.5
225 SM.	225 S	4, 8	866	22	726	985	400	350	450	19	5	2 x FL 13	93.5	243	118	89.5	168	163.5
225 SM.	225 M	2, 2/4	836	22	726	955	400	350	450	19	5	2 x FL 13	93.5	243	118	89.5	168	163.5
225 SM.	225 M	4-8	866	22	726	985	400	350	450	19	5	2 x FL 13	93.5	243	118	89.5	168	163.5
250 SM.	250 S	2	875	22	735	992	500	450	550	19	5	2 x FL 13	93.5	243	118	89.5	168	163.5
250 SM.	250 S	4-8	875	22	735	992	500	450	550	19	5	2 x FL 13	93.5	243	118	89.5	168	163.5
250 SM.	250 M	2, 2/4	875	22	735	992	500	450	550	19	5	2 x FL 13	93.5	243	118	89.5	168	163.5
250 SM.	250 M	4-8	875	22	735	992	500	450	550	19	5	2 x FL 13	93.5	243	118	89.5	168	163.5

¹⁾ Tolerances

DA 45-55	ISO k6
D 55-65	ISO m6
F, FA	ISO h9
N	ISO js6

²⁾ Shoulder of shaft extension and contact surface of flange are in the same plane.

³⁾ Flange opening is provided with pipe flange FL 13, with tapped lead-in holes plugged with sealing plugs.

Single- and two-speed motors: 2 x Pr 37, 2 x Pg 29

Motors for 230 V 50 Hz have pipe flange FL 21 and 2 x Pr 54, 2 x Pg 42.

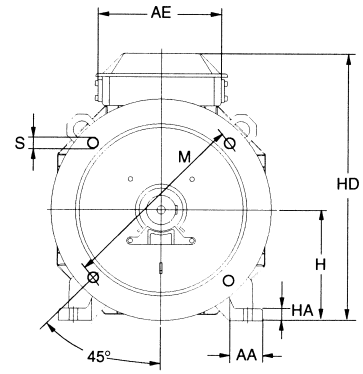
⁴⁾ For flange opening FL 13: 2 x Pr 37, 2 x Pg 29

⁵⁾ For extra large terminal box with flange opening FL 21: 2 x Pr 54, 2 x Pg 42.

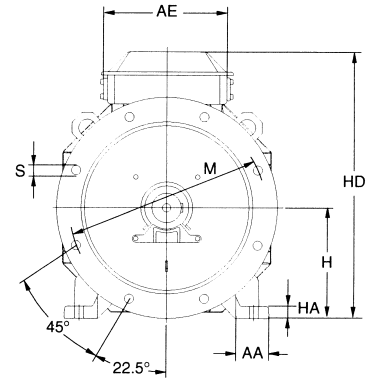
M2AA 200-250

Basic design

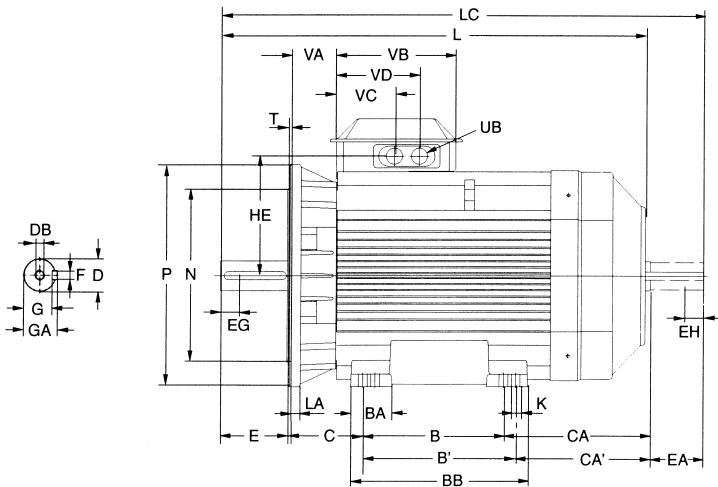
Foot- and flange-mounted motor IM 2001, IM 2002, IM B 35



M2AA 200



M2AA 225-250



IM 2001, IM 2002, IM B 35

Type M2AA	IEC-size	No. of poles	A ¹⁾	AA	AB	AC	AE	B ¹⁾	B ¹⁾	BA	BB	C ¹⁾	CA ¹⁾	CA' ¹⁾	CB	D ¹⁾	DA ¹⁾	DB	DC	E ⁵⁾	EA	EG	EH	F ¹⁾	FA ¹⁾	G	GA
200 ML.	200 M	2-8	318	64	380	386	243	267	305 ⁶⁾	98	365	133	273	235	30	55	45	M20	M16	110	110	42	36	16	16	49	59
200 ML.	200 L	2-8	318	64	380	386	243	267 ⁶⁾	305	98	365	133	273	235	30	55	45	M20	M16	110	110	42	36	16	16	49	59
225 SM.	225 S	4, 8	356	69	418	425	243	286	311 ⁶⁾	84	360	149	300	275	24.5	60	55	M20	M20	140	110	42	42	18	16	53	64
225 SM.	225 M	2, 2/4	356	69	418	425	243	286 ⁶⁾	311	84	360	149	300	275	24.5	55	55	M20	M20	110	110	42	42	16	16	49	59
225 SM.	225 M	4-8	356	69	418	425	243	286 ⁶⁾	311	84	360	149	300	275	24.5	60	55	M20	M20	140	110	42	42	18	16	53	64
250 SM.	250 S	2	406	78	474	471	243	311	349 ⁶⁾	94.5	409	168	263	225	40	60	55	M20	M20	140	110	42	42	18	16	53	64
250 SM.	250 S	4-8	406	78	474	471	243	311	349 ⁶⁾	94.5	409	168	263	225	30	65	55	M20	M20	140	110	42	42	18	16	58	69
250 SM.	250 M	2, 2/4	406	78	474	471	243	311 ⁶⁾	349	94.5	409	168	263	225	40	60	55	M20	M20	140	110	42	42	18	16	53	64
250 SM.	250 M	4-8	406	78	474	471	243	311 ⁶⁾	349	94.5	409	168	263	225	30	65	55	M20	M20	140	110	42	42	18	16	58	69

Type M2AA	IEC-size	No. of poles	GB	GC	H ¹⁾	HA	HD	HE	K	L	LA	LB	LC	M	N ¹⁾	P	S	T	UB ²⁾	VA	VB	VC ³⁾	VC ⁴⁾	VD ³⁾	VD ⁴⁾
200 ML.	200 M	2-8	39	49	200	25	500.5	224	18	774	20	664	893	350	300	400	19	5	2 x FL 13	75.5	243	118	89.5	168	163.5
200 ML.	200 L	2-8	39	49	200	25	500.5	224	18	774	20	664	893	350	300	400	19	5	2 x FL 13	75.5	243	118	89.5	168	163.5
225 SM.	225 S	4, 8	49	59	225	25	546	244.5	18	866	22	726	985	400	350	450	19	5	2 x FL 13	93.5	243	118	89.5	168	163.5
225 SM.	225 M	2, 2/4	49	59	225	25	546	244.5	18	836	22	726	955	400	350	450	19	5	2 x FL 13	93.5	243	118	89.5	168	163.5
225 SM.	225 M	4-8	49	59	225	25	546	244.5	18	866	22	726	985	400	350	450	19	5	2 x FL 13	93.5	243	118	89.5	168	163.5
250 SM.	250 S	2	49	59	250	40	594	267.5	22	875	22	735	992	500	450	550	19	5	2 x FL 13	93.5	243	118	89.5	168	163.5
250 SM.	250 S	4-8	49	59	250	30	594	267.5	22	875	22	735	992	500	450	550	19	5	2 x FL 13	93.5	243	118	89.5	168	163.5
250 SM.	250 M	2	49	59	250	40	594	267.5	22	875	22	735	992	500	450	550	19	5	2 x FL 13	93.5	243	118	89.5	168	163.5
250 SM.	250 M	2/4	49	59	250	30	594	267.5	22	875	22	735	992	500	450	550	19	5	2 x FL 13	93.5	243	118	89.5	168	163.5
250 SM.	250 M	4-8	49	59	250	30	594	267.5	22	875	22	735	992	500	450	550	19	5	2 x FL 13	93.5	243	118	89.5	168	163.5

¹⁾ Tolerances

A, B	ISO js14
C, CA	+0 -2
D 55-65	ISO m6
DA 45-55	ISO k6
F, FA	ISO h9
H	+0 -0.5
N	ISO js6

²⁾ Flange opening is provided with pipe flange FL 13, with tapped lead-in holes plugged with sealing plugs.

Single- and two-speed motors: 2 x Pr 37, 2 x Pg 29
Motors for 230 V 50 Hz have pipe flange FL 21 and 2 x Pr 54, 2 x Pg 42.

³⁾ For flange opening FL 13: 2 x Pr 37, 2 x Pg 29

⁴⁾ For extra large terminal box with flange opening FL 21: 2 x Pr 54, 2 x Pg 42.

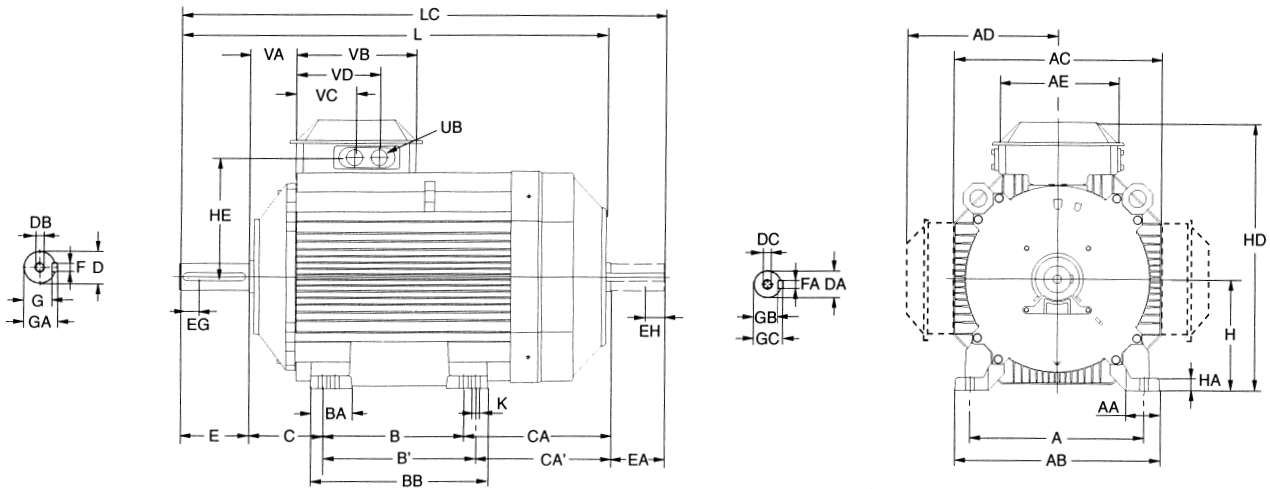
⁵⁾ Shoulder of shaft extension and contact surface of flange are in the same plane.

⁶⁾ Not acc. to IEC.

M2AA 200-250

High-output design

Foot-mounted motor IM 1001, IM 1002, IM B 3



Dimension AD and HD refer to side mounted terminal box, see page 52.

IM 1001, IM 1002, IM B 3

Type M2AA	IEC-size	No. of poles	A ¹⁾	AA	AB	AC	AE	B ¹⁾	BA	BB	C ¹⁾	CA ¹⁾	CA' ¹⁾	CB	D ¹⁾	DA ¹⁾	DB	DC	E	EA	EG	EH
200 ML	200 L	2-8	318	64	380	386	243	305	98	365	133	273	235	30	55	45	M20	M16	110	110	42	36
225 SM	225 M	2	356	69	418	425	243	311	84	360	149	300	275	24.5	55	55	M20	M20	110	110	42	42
225 SM	225 M	4-8	356	69	418	425	243	311	84	360	149	300	275	24.5	60	55	M20	M20	140	110	42	42
250 SM	250 M	2	406	78	474	471	243	349	94.5	409	168	263	225	30	60	55	M20	M20	140	110	42	42
250 SM	250 M	4-8	406	78	474	471	243	349	94.5	409	168	263	225	30	65	55	M20	M20	140	110	42	42

Type M2AA	IEC-size	No. of poles	F ¹⁾	FA ¹⁾	G	GA	GB	GC	H ¹⁾	HA	HD	HE	K	L	LC	UB ²⁾	VA	VB	VC ³⁾	VC ⁴⁾	VD ³⁾	VD ⁴⁾	
200 ML	200 L	2-8	16	16	49	59	39	49	200	25	500.5	224	18	774	893	2 x FL 13	13	75.5	243	118	89.5	168	163.5
225 SM	225 M	2	16	16	49	59	49	59	225	25	546	244.5	18	836	955	2 x FL 13	13	93.5	243	118	89.5	168	163.5
225 SM	225 M	4-8	18	16	53	64	49	59	225	25	546	244.5	18	866	985	2 x FL 13	13	93.5	243	118	89.5	168	163.5
250 SM	250 M	2	18	16	53	64	49	59	250	40	594	267.5	22	875	992	2 x FL 13	13	93.5	243	118	89.5	168	163.5
250 SM	250 M	4-8	18	16	58	69	49	59	250	30	594	267.5	22	875	992	2 x FL 13	13	93.5	243	118	89.5	168	163.5

¹⁾ Tolerances

A, B	ISO js14
C, CA	+0 -2
DA 42	ISO k6
D, DA 55-60	ISO m6
F, FA	ISO h9
H	+0 -0.5

²⁾ Flange opening is provided with pipe flange FL 13, with tapped lead-in holes plugged with sealing plugs, 2 x Pr 37, 2 x Pg 29.

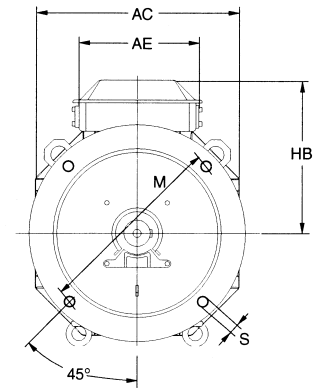
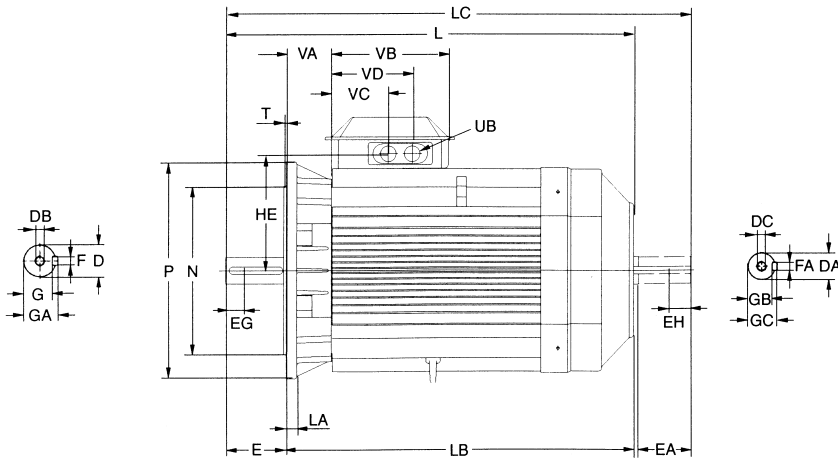
³⁾ For flange opening FL 13: 2 x Pr 37, 2 x Pg 29.

⁴⁾ For extra large terminal box with flange opening FL 21: 2 x Pr 54, 2 x Pg 42.

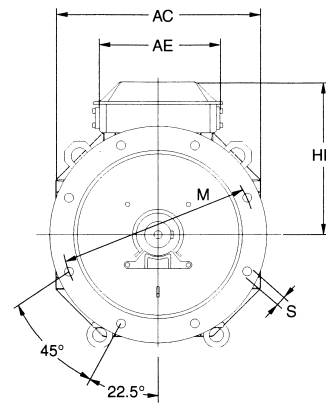
M2AA 200-250

High-output design

Flange-mounted motor IM 3001, IM 3002, IM B 5



M2AA 200



M2AA 225-250

IM 3001, IM 3002, IM B 5

Type M2AA	IEC-size	No. of poles	AC	AE	D ¹⁾	DA ¹⁾	DB	DC	E ²⁾	EA	EG	EH	F ¹⁾	FA	G	GA	GB	GC	HB	HE
200 ML.	200 L	2-8	386	243	55	45	M20	M16	110	110	42	36	16	16	49	59	39	49	300.5	224
225 SM.	225 M	2	427	243	55	55	M20	M20	110	110	42	42	16	16	49	59	49	59	321	244.5
225 SM.	225 M	4-8	427	243	60	55	M20	M20	140	110	42	42	18	16	53	64	49	59	321	244.5
250 SM.	250 M	2	471	243	60	55	M20	M20	140	110	42	42	18	16	53	64	49	59	344	267.5
250 SM.	250 M	4-8	471	243	65	55	M20	M20	140	110	42	42	18	16	58	69	49	59	344	267.5

Type M2AA	IEC-size	No. of poles	L	LA	LB	LC	M	N	P	S	T	UB ³⁾	VA	VB	VC ⁴⁾	VC ⁵⁾	VD ⁴⁾	VD ⁵⁾
200 ML.	200 L	2-8	774	20	664	893	350	300	400	19	5	2 x FL 13	75.5	243	118	89.5	168	163.5
225 SM.	225 M	2	836	22	726	955	400	350	450	19	5	2 x FL 13	93.5	243	118	89.5	168	163.5
225 SM.	225 M	4-8	866	22	726	985	400	350	450	19	5	2 x FL 13	93.5	243	118	89.5	168	163.5
250 SM.	250 M	2	875	22	735	992	500	450	550	19	5	2 x FL 13	93.5	243	118	89.5	168	163.5
250 SM.	250 M	4-8	875	22	735	992	500	450	550	19	5	2 x FL 13	93.5	243	118	89.5	168	163.5

¹⁾ Tolerances

DA 42 ISO k6
D, DA 55-60 ISO m6
F, FA ISO h9
N ISO js6

²⁾ Shoulder of shaft extension and contact surface of flange are in the same plane.

³⁾ Flange opening is provided with pipe flange FL 13, with tapped lead-in holes plugged with sealing plugs.

Single- and two-speed motors: 2 x Pr 37, 2 x Pg 29

Motors for 230 V 50 Hz have pipe flange FL 21 and 2 x Pr 54, 2 x Pg 42.

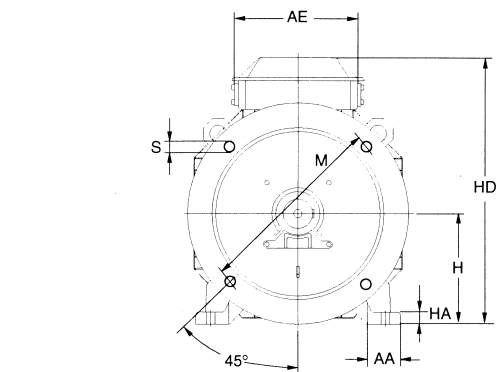
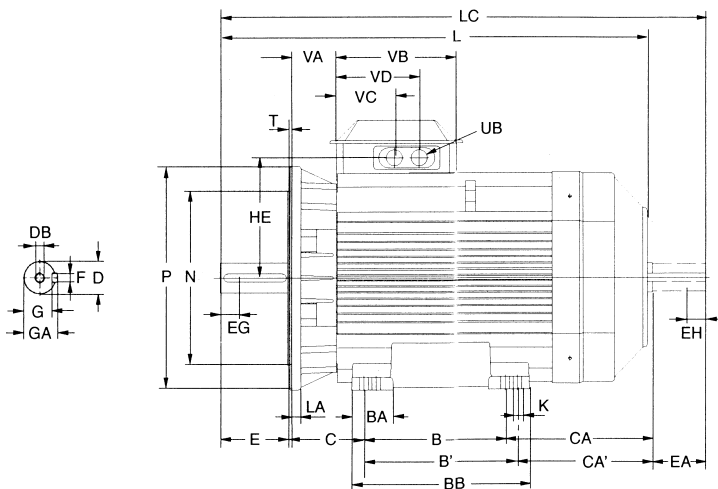
⁴⁾ For flange opening FL 13: 2 x Pr 37, 2 x Pg 29.

⁵⁾ For extra large terminal box with flange opening FL 21: 2 x Pr 54, 2 x Pg 42

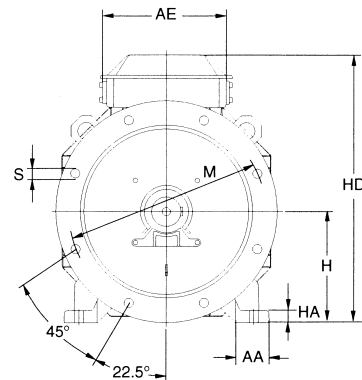
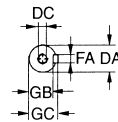
M2AA 200-250

High-output design

Foot- and flange-mounted motor IM 2001, IM 2002, IM B 35



M2AA 200



M2AA 225-250

IM 2001, IM 2002, IM B 35

Type	IEC-size	No. of poles	A ¹⁾	AA	AB	AC	AE	B ¹⁾	B ¹⁾	BA	BB	C ¹⁾	CA ¹⁾	CA ¹⁾	CB	D ¹⁾	DA ¹⁾	DB	DC	E ⁵⁾	EA	EG	EH	F ¹⁾	FA ¹⁾	G	GA
200 ML	200 L	2-8	318	64	380	386	243	267	305	98	365	133	273	235	30	55	45	M20	M16	110	110	42	36	16	16	49	59
225 SM	225 M	2	356	69	418	425	243	286	311	84	360	149	300	275	24.5	55	55	M20	M20	110	110	42	42	16	16	49	59
225 SM	225 M	4-8	356	69	418	425	243	286	311	84	360	149	300	275	24.5	60	55	M20	M20	140	110	42	42	18	16	53	64
250 SM	250 M	2	406	78	474	471	243	311	349	94.5	409	168	263	225	40	60	55	M20	M20	140	110	42	42	18	16	53	64
250 SM	250 M	4-8	406	78	474	471	243	311	349	94.5	409	168	263	225	30	65	55	M20	M20	140	110	42	42	18	16	58	69

Type	IEC-size	No. of poles	GB	GC	H ¹⁾	HA	HD	HE	K	L	LA	LB	LC	M	N ¹⁾	P	S	T	UB ²⁾	VA	VB	VC ³⁾	VC ⁴⁾	VD ³⁾	VD ⁴⁾
200 ML	200 L	2-8	39	49	200	25	500.5	224	18	774	20	664	893	350	300	400	19	5	2 x FL 13	75.5	243	118	89.5	168	163.5
225 SM	225 M	2	49	59	225	25	546	244.5	18	836	22	726	955	400	350	450	19	5	2 x FL 13	93.5	243	118	89.5	168	163.5
225 SM	225 M	4-8	49	59	225	25	546	244.5	18	866	22	726	985	400	350	450	19	5	2 x FL 13	93.5	243	118	89.5	168	163.5
250 SM	250 M	2	49	59	250	40	594	267.5	22	875	22	735	992	500	450	550	19	5	2 x FL 13	93.5	243	118	89.5	168	163.5
250 SM	250 M	4-8	49	59	250	30	594	267.5	22	875	22	735	992	500	450	550	19	5	2 x FL 13	93.5	243	118	89.5	168	163.5

¹⁾ Tolerances

- A, B ISO js14
- C, CA +0 -2
- D 55-65 ISO m6
- DA 45-55 ISO k6
- F, FA ISO h9
- H +0 -0.5
- N ISO j6

²⁾ Flange opening is provided with pipe flange FL 13, with tapped lead-in holes plugged with sealing plugs, 2 x Pr 37, 2 x Pg 29.

³⁾ For flange opening FL 13: 2 x Pr 37, 2 x Pg 29.

⁴⁾ For extra large terminal box with flange opening FL 21: 2 x Pr 54, 2 x Pg 42.

⁵⁾ Shoulder of shaft extension and contact surface of flange are in the same plane.