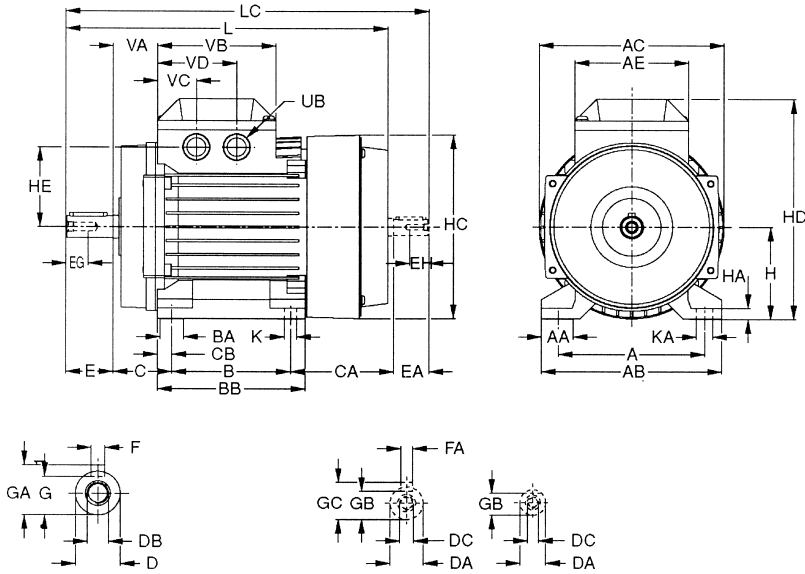


Dimension drawings

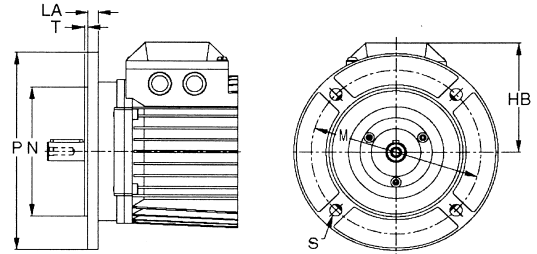
M2AA 63-100

Basic design and high-output design

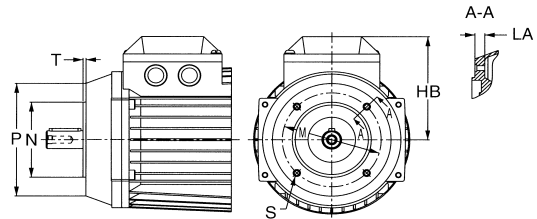
Foot-mounted motor IM 1081, IM 1082, IM B 3



Flange-mounted motor, large flange IM 3081, IM 3082, IM B 5



Flange-mounted motor, small flange IM 3681, IM 3682, IM B 14



IM 1081, IM 1082, IM B 3

Type M2AA	A ¹⁾	AA	AB	AC	AE	B ¹⁾	BA	BB	C ¹⁾	CA	CB	D ¹⁾	DA ¹⁾	DB	DC	E ²⁾	EA	EG	EH	F ¹⁾
63 ²⁾	100	16	120	120	85	80	14	98	40	68	9	14	11	M5	M4	30	23	12.5	10	5
71	112	20	136	140	85	90	21	112	45	80	11	14	11	M5	M4	30	23	12.5	10	5
80	125	25	154	158	97	100	20	125	50	87	12.5	19	14	M8	M5	40	30	19	12.5	6
90 S	140	27	170	178	97	100	30	125	56	94	12.5	24	14	M8	M5	50	30	19	12.5	8
90 L	140	27	170	178	97	125	30	150	56	94	12.5	24	14	M8	M5	50	30	19	12.5	8
100 L	160	32	197	198	97	140	34	172	63	100	16	28	19	M10	M8	60	40	22	19	8

Type M2AA	FA ¹⁾	G	GA	GB	GC	H ¹⁾	HA	HC	HD	HE	K	KA	L	LC	UB	VA	VB	VC	VD
63 ²⁾	-	11	16	9.5	-	63	7	123	150	50.5	7	10	213	241	Pr 18.6, Pg 11	31	92	30.5	61.5
71	-	11	16	9.5	-	71	9	141	172	62.5	7	11	239	268	Pr 22.5, Pg 16	34	92	30.5	61.5
80	5	15.5	21.5	11	16	80	10	159	192	68.5	10	14	272	307	Pr 22.5, Pg 16	37.5	100	33	67
90 S	5	20	27	11	16	90	10	179	212	79.5	10	14	295	330	Pr 22.5, Pg 16	43.5	100	33	67
90 L	5	20	27	11	16	90	10	179	212	79.5	10	14	320	355	Pr 22.5, Pg 16	43.5	100	33	67
100 L	6	24	31	15.5	21.5	100	12	199	236	93.5	12	14	358.5	403	Pr 22.5, Pg 16	47	100	33	67

IM 3081, IM 3082, IM B 5

Type M2AA	HB	LA	M	N	P	S	T
63 ²⁾	87	9	115	95	140	10	3
63	87	9	130	110	160	10	3.5
71	101	9	130	110	160	10	3.5
80	112	10	165	130	200	12	3.5
90 S	122	10	165	130	200	12	3.5
90 L	122	10	165	130	200	12	3.5
100 L	136	11	215	180	250	15	4

IM 3681, IM 3682, IM B 14

Type M2AA	HB	LA	M	N	P	S	T
63 ²⁾	87	8	75	60	90	M5	2.5
71	101	10	85	70	105	M6	2.5
80	112	10	100	80	120	M6	3
90 S	122	14	115	95	140	M8	3
90 L	122	14	115	95	140	M8	3
100 L	136	16	130	110	160	M8	3.5

¹⁾ Tolerances
A, B ISO js14
D, DA ISO j6
F, FA ISO h9
H +0 -0.5
N ISO j6
C, CA ±0.8

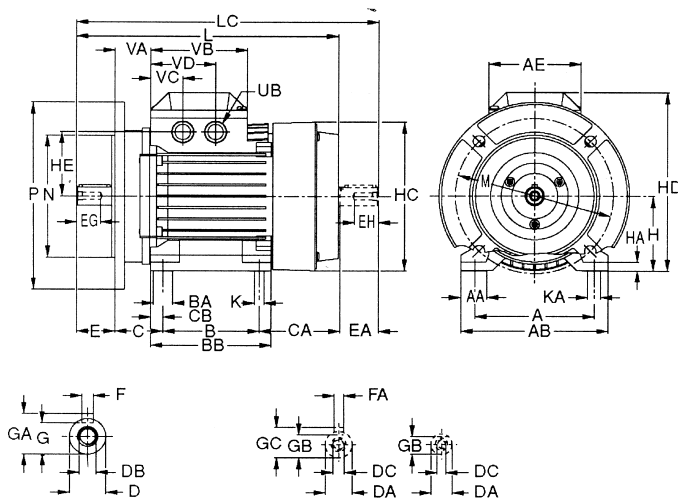
²⁾ M2AA 63 can be supplied with shaft extension D = 11, E = 23, F = 4 and GA = 12.5 mm, and DB = M4, if B5 flange M = 115 mm.

³⁾ Alternative version of additional shaft extension for M2AA 63 and M2AA 71.

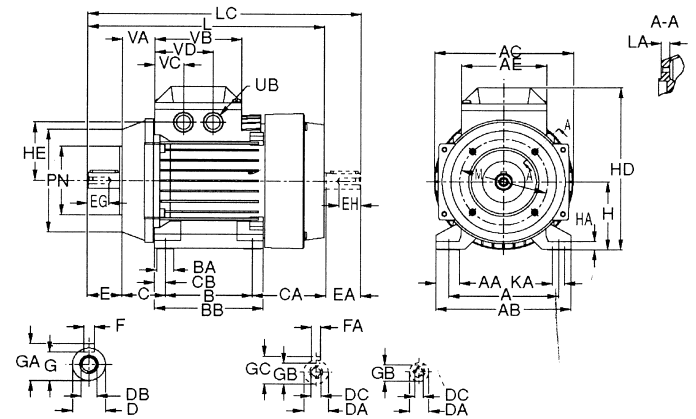
M2AA 63-100

Basic and high output design

Foot- and flange-mounted motor
IM 2081, IM 2082, IM B 35, large flange



Foot- and flange-mounted motor
IM 2181, IM 2182, IM B 34, small flange



IM 2081, IM 2082, IM B 35, IM 2181, IM 2182, IM B 34

Type M2AA	A ¹⁾	AA	AB	AC	AE	B ¹⁾	BA	BB	C ¹⁾	CA	CB	D ¹⁾	DA ¹⁾	DB	DC	E ²⁾	EA	EG	EH	F ¹⁾
63 ²⁾	100	16	120	120	85	80	14	98	40	68	9	14	11	M5	M4	30	23	12.5	10	5
71	112	20	136	140	85	90	21	112	45	80	11	14	11	M5	M4	30	23	12.5	10	5
80	125	25	154	158	97	100	20	125	50	87	12.5	19	14	M8	M5	40	30	19	12.5	6
90 S	140	27	170	178	97	100	30	125	56	94	12.5	24	14	M8	M5	50	30	19	12.5	8
90 L	140	27	170	178	97	125	30	150	56	94	12.5	24	14	M8	M5	50	30	19	12.5	8
100 L	160	32	197	198	97	140	34	172	63	100	16	28	19	M10	M8	60	40	22	19	8

Type M2AA	FA ¹⁾	G	GA	GB	GC	H ¹⁾	HA	HC	HD	HE	K	KA	L	LC	UB	VA	VB	VC	VD
63 ²⁾	-	11	16	9.5	-	63	7	123	150	50.5	7	10	213	241	Pr 18.6, Pg 11	31	92	30.5	61.5
71	-	11	16	9.5	-	71	9	141	172	62.5	7	11	239	268	Pr 22.5, Pg 16	34	92	30.5	61.5
80	5	15.5	21.5	11	16	80	10	159	192	68.5	10	14	272	307	Pr 22.5, Pg 16	37.5	100	33	67
90 S	5	20	27	11	16	90	10	179	212	79.5	10	14	295	330	Pr 22.5, Pg 16	43.5	100	33	67
90 L	5	20	27	11	16	90	10	179	212	79.5	10	14	320	355	Pr 22.5, Pg 16	43.5	100	33	67
100 L	6	24	31	15.5	21.5	100	12	199	236	93.5	12	15	358,5	403	Pr 22.5, Pg 16	47	100	33	67

IM 2081, IM 2082, IM B 35

Type M2AA	HB	LA	M	N	P	S	T
63 ²⁾	87	9	115	95	140	10	3
63	87	9	130	110	160	10	3.5
71	101	9	130	110	160	10	3.5
80	112	10	165	130	200	12	3.5
90 S	122	10	165	130	200	12	3.5
90 L	122	10	165	130	200	12	3.5
100 L	136	11	215	180	250	15	4

IM 2181, IM 2182, IM B 34

Type M2AA	HB	LA	M	N	P	S	T
63 ²⁾	87	8	75	60	90	M5	2.5
71	101	10	85	70	105	M6	2.5
80	112	10	100	80	120	M6	3
90 S	122	14	115	95	140	M8	3
90 L	122	14	115	95	140	M8	3
100 L	136	16	130	110	160	M8	3.5

¹⁾ Tolerances
A, B ISO js14
D, DA ISO j6
F, FA ISO h9
H +0 -0.5
N ISO j6
C, CA ±0.8

²⁾ M2AA 63 can be supplied with shaft extension D = 11, E = 23, F = 4 and GA = 12.5 mm, and DB = M4, if B5 flange M = 115 mm.

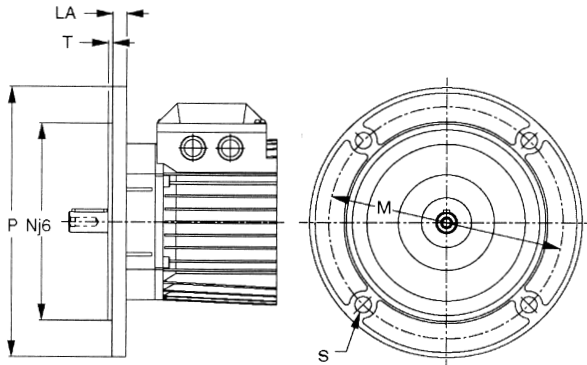
³⁾ Alternative version of additional shaft extension for M2AA 63 and M2AA 71.

M2AA 63-100

Special design with DIN flange

Basic design and high-output design

Flange-mounted (IM 3081, IM B 5) and foot- and flange-mounted motor (IM 2081, IM B 35), respectively.

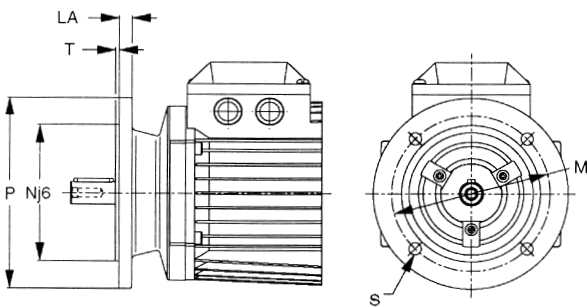


DIN A-flange. Large flange with clearance holes. Larger than large flange of basic design. See variant codes 080 and 091, respectively.

Type M2AA	Flange designation		Flange dimensions					
	IEC	DIN	LA	M	N	P	S	T
63 ¹⁾	FF 115	A 140	9	115	95	140	9	3
71	FF 165	A 200	10	165	130	200	12	3.5
80	FF 215	A 250	11	215	180	250	15	4
90 S	FF 215	A 250	11	215	180	250	15	4
90 L	FF 215	A 250	11	215	180	250	15	4
100 L	FF 265	A 300	12	265	230	300	15	4

¹⁾ Smaller than corresponding IEC flange.

Flange-mounted (IM 3081, IM B 5) and foot- and flange-mounted motor (IM 2081, IM B 35), respectively.

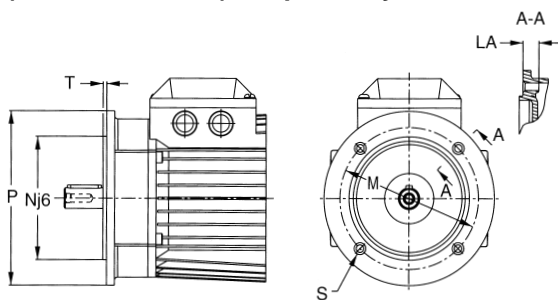


DIN A-flange. Large flange with clearance holes. Smaller than large flange of basic design. Only available on request.

Type M2AA	Flange designation		Flange dimensions					
	IEC	DIN	LA	M	N	P	S	T
71	FF 115	A 140	9	115	95	140	10	3
80	FF 130	A 160	9	130	110	160	10	3.5
90 S	FF 130	A 160	9	130	110	160	10	3.5
90 L	FF 130	A 160	9	130	110	160	10	3.5
100 L	FF 165	A 200	10	165	130	200	12	3.5

Note: Dimensions C, L and LC are 15 mm longer than in the standard version.

Flange-mounted (IM 3681, IM B 14) and foot- and flange-mounted motor (IM 2181, IM B 34), respectively.



DIN C-flange. Large flange with tapped holes. Larger than small flange of basic design. See variant codes 078 and 090, respectively.

Type M2AA	Flange designation		Flange dimensions					
	IEC	DIN	LA	M	N	P	S	T
71	FT 115	C 140	12	115	95	140	M8	3
80	FT 130	C 160	12	130	110	160	M8	3.5
90 S	FT 130	C 160	15	130	110	160	M8	3.5
90 L	FT 130	C 160	15	130	110	160	M8	3.5
100 L	FT 165	C 200	15	165	130	200	M10	3.5