

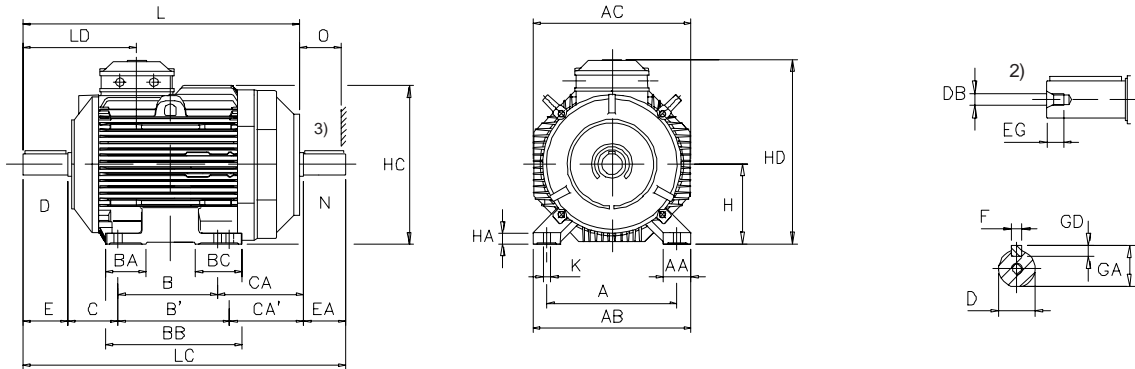
Dimension drawing

M2BA 160 - 250

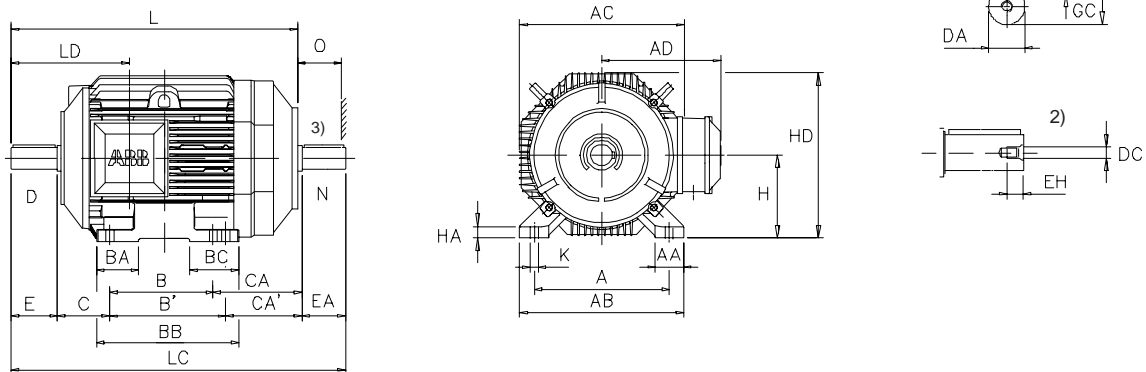
Foot-mounted; IM B3 (IM1001), IM B6 (IM1051), IM B7 (IM1061),
IM B8 (IM1071), IM V5 (IM1011), IM V6 (IM1031)

Cast iron motors

Terminal box top-mounted



Terminal box side-mounted



| Type M2BA | Poles | A | AA | AB | AC | AD | B | B' | BA | BB | BC | C | CA | CA' | D ¹⁾ | DA ¹⁾ | DB | DC | E | EA |
|-----------|-------|-----|----|-----|-----|-----|-----|-----|-----|-----|-----|-----|-----|-----|-----------------|------------------|-----|-----|-----|-----|
| | | b | n | f | g | | a | | m | e | | w1 | w2 | | d | d1 | d6 | d7 | l | l1 |
| 160 M_ | 2-8 | 254 | 70 | 320 | 320 | 250 | 210 | - | 80 | 260 | 80 | 108 | 188 | - | 42 | 42 | M16 | M16 | 110 | 110 |
| 160 L | 2-8 | 254 | 70 | 320 | 320 | 250 | 254 | - | 80 | 304 | 100 | 108 | 204 | - | 42 | 42 | M16 | M16 | 110 | 110 |
| 180 M,L | 2-8 | 279 | 70 | 350 | 350 | 264 | 241 | 279 | 85 | 350 | 120 | 121 | 246 | 208 | 48 | 48 | M16 | M16 | 110 | 110 |
| 200 ML_ | 2-8 | 318 | 73 | 386 | 386 | 294 | 267 | 305 | 100 | 363 | 100 | 133 | 266 | 228 | 55 | 55 | M20 | M20 | 110 | 110 |
| 225 SM_ | 2 | 356 | 80 | 436 | 436 | 327 | 286 | 311 | 100 | 373 | 100 | 149 | 285 | 260 | 55 | 55 | M20 | M20 | 110 | 110 |
| | 4-8 | 356 | 80 | 436 | 436 | 327 | 286 | 311 | 100 | 373 | 100 | 149 | 285 | 260 | 60 | 60 | M20 | M20 | 140 | 140 |
| 250 SM_ | 2 | 406 | 86 | 494 | 494 | 350 | 311 | 349 | 126 | 432 | 126 | 168 | 271 | 233 | 60 | 60 | M20 | M20 | 140 | 140 |
| | 4-8 | 406 | 86 | 494 | 494 | 350 | 311 | 349 | 126 | 432 | 126 | 168 | 271 | 233 | 65 | 65 | M20 | M20 | 140 | 140 |

| Type M2BA | Poles | EG | EH | F | FA | GA | GC | GD | GF | H ¹⁾ | HA | HC | HD top-m. p | HD side-m. p | K | L | LC | LD | O ⁴⁾ |
|-----------|-------|----|----|----|----|------|------|----|----|-----------------|----|-----|-------------|--------------|------|-----|------|-----|-----------------|
| | | | | u | u1 | t | t1 | | | h | c | | s | k | k1 | | | | d |
| 160 M_ | 2-8 | 36 | 36 | 12 | 12 | 45 | 45 | 8 | 8 | 160 | 22 | 320 | 410 | 320 | 14.5 | 611 | 726 | 261 | 40 |
| 160 L | 2-8 | 36 | 36 | 12 | 12 | 45 | 45 | 8 | 8 | 160 | 22 | 320 | 410 | 320 | 14.5 | 671 | 786 | 261 | 40 |
| 180 M,L | 2-8 | 36 | 36 | 14 | 14 | 51.5 | 51.5 | 9 | 9 | 180 | 28 | 355 | 444 | 355 | 14.5 | 714 | 828 | 253 | 40 |
| 200 ML_ | 2-8 | 42 | 42 | 16 | 16 | 59 | 59 | 10 | 10 | 200 | 30 | 393 | 494 | 393 | 18.5 | 773 | 886 | 296 | 40 |
| 225 SM_ | 2 | 42 | 42 | 16 | 16 | 59 | 59 | 10 | 10 | 225 | 32 | 443 | 552 | 443 | 18.5 | 825 | 940 | 324 | 40 |
| | 4-8 | 42 | 42 | 18 | 18 | 64 | 64 | 11 | 11 | 225 | 32 | 443 | 552 | 443 | 18.5 | 855 | 1000 | 354 | 40 |
| 250 SM_ | 2 | 42 | 42 | 18 | 18 | 64 | 64 | 11 | 11 | 250 | 35 | 497 | 600 | 497 | 24 | 885 | 1030 | 354 | 40 |
| | 4-8 | 42 | 42 | 18 | 18 | 69 | 69 | 11 | 11 | 250 | 35 | 497 | 600 | 497 | 24 | 885 | 1030 | 354 | 40 |

¹⁾ Tolerances:
D, DA ISO k6 < Ø 50mm
ISO m6 > Ø 50mm
keys acc. to DIN 6885, sheet 1
H ISO 0, -0.5

²⁾ In the shaft end the motors have a centre hole with protective sinking and thread to DIN 332 sheet 2.
³⁾ Second shaft end on request.
⁴⁾ Cooling distance.

Dimensions: capital letters acc. to IEC 72
small letters acc. to DIN 42673.

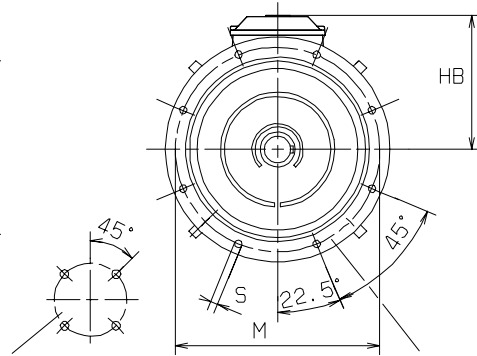
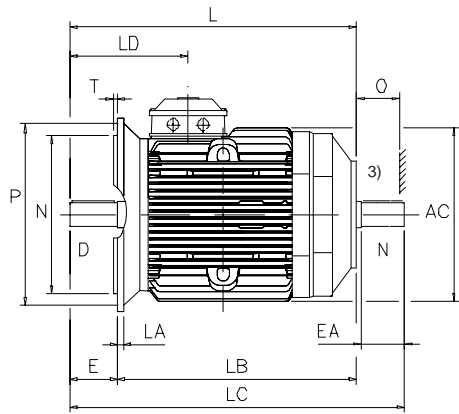
Dimensions for terminal boxes on page 50,
for protection roofs on page 54.

Dimension drawing

M2BA 160 - 250

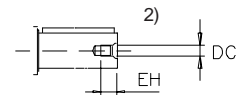
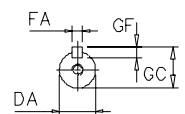
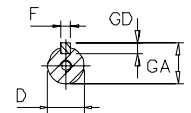
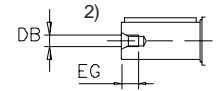
Flange-mounted;
IM B5 (IM3001), IM V1 (IM3011), IM V3 (IM3031)

Cast iron motors



4 fixing holes
for M ≤ 350 mm (IEC 72),
for P ≤ 400 mm (DIN 42948)

8 fixing holes
for M > 350 mm (IEC 72),
for P > 400 mm (DIN 42948)



| Type M2BA | Poles | AC | D ₁₎ | DA ₁₎ | DB | DC | E | EA | EG | EH | F | FA | GA | GC |
|-----------|-------|-----|-----------------|------------------|-----|-----|-----|-----|----|----|----|----|------|------|
| | | g | d | d1 | d6 | d7 | l | l1 | | | u | u1 | t | t1 |
| 160 M_ | 2-8 | 320 | 42 | 42 | M16 | M16 | 110 | 110 | 36 | 36 | 12 | 12 | 45 | 45 |
| 160 L | 2-8 | 320 | 42 | 42 | M16 | M16 | 110 | 110 | 36 | 36 | 12 | 12 | 45 | 45 |
| 180 M,L | 2-8 | 350 | 48 | 48 | M16 | M16 | 110 | 110 | 36 | 36 | 14 | 14 | 51.5 | 51.5 |
| 200 ML_ | 2-8 | 386 | 55 | 55 | M20 | M20 | 110 | 110 | 42 | 42 | 16 | 16 | 59 | 59 |
| 225 SM_ | 2 | 436 | 55 | 55 | M20 | M20 | 110 | 110 | 42 | 42 | 16 | 16 | 59 | 59 |
| | 4-8 | 436 | 60 | 60 | M20 | M20 | 140 | 140 | 42 | 42 | 18 | 18 | 64 | 64 |
| 250 SM_ | 2 | 494 | 60 | 60 | M20 | M20 | 140 | 140 | 42 | 42 | 18 | 18 | 64 | 64 |
| | 4-8 | 494 | 65 | 65 | M20 | M20 | 140 | 140 | 42 | 42 | 18 | 18 | 69 | 69 |

| Type M2BA | Poles | GD | GF | HB | L | LA | LB | LC | LD | M | N ₁₎ | O ₄₎ | P | S | T |
|-----------|-------|----|----|-----|-----|----|-----|------|-----|-----|-----------------|-----------------|-----|------|----|
| | | | | | k | c1 | | k1 | | e1 | b1 | | a1 | s1 | f1 |
| 160 M_ | 2-8 | 8 | 8 | 250 | 611 | 13 | 501 | 726 | 261 | 300 | 250 | 40 | 350 | 18.5 | 5 |
| 160 L | 2-8 | 8 | 8 | 250 | 671 | 13 | 561 | 786 | 261 | 300 | 250 | 40 | 350 | 18.5 | 5 |
| 180 M,L | 2-8 | 9 | 9 | 264 | 714 | 13 | 604 | 828 | 253 | 300 | 250 | 40 | 350 | 18.5 | 5 |
| 200 ML_ | 2-8 | 10 | 10 | 294 | 773 | 15 | 663 | 886 | 296 | 350 | 300 | 40 | 400 | 18.5 | 5 |
| 225 SM_ | 2 | 10 | 10 | 327 | 825 | 16 | 715 | 940 | 324 | 400 | 350 | 40 | 450 | 18.5 | 5 |
| | 4-8 | 11 | 11 | 327 | 855 | 16 | 715 | 1000 | 354 | 400 | 350 | 40 | 450 | 18.5 | 5 |
| 250 SM_ | 2 | 11 | 11 | 350 | 885 | 18 | 745 | 1030 | 354 | 500 | 450 | 40 | 550 | 18.5 | 5 |
| | 4-8 | 11 | 11 | 350 | 885 | 18 | 745 | 1030 | 354 | 500 | 450 | 40 | 550 | 18.5 | 5 |

1) Tolerances:

D, DA ISO k6 < Ø 50mm
ISO m6 > Ø 50mm
keys acc. to DIN 6885, sheet 1
N ISO j6

2) In the shaft end the motors have a centre hole with protective sinking and thread to DIN 332 sheet 2.

3) Second shaft end on request.

4) Cooling distance.

Dimensions: capital letters acc. to IEC 72
small letters acc. to DIN 42673.

Dimensions for terminal boxes on page 50,
for protection roofs on page 54.