

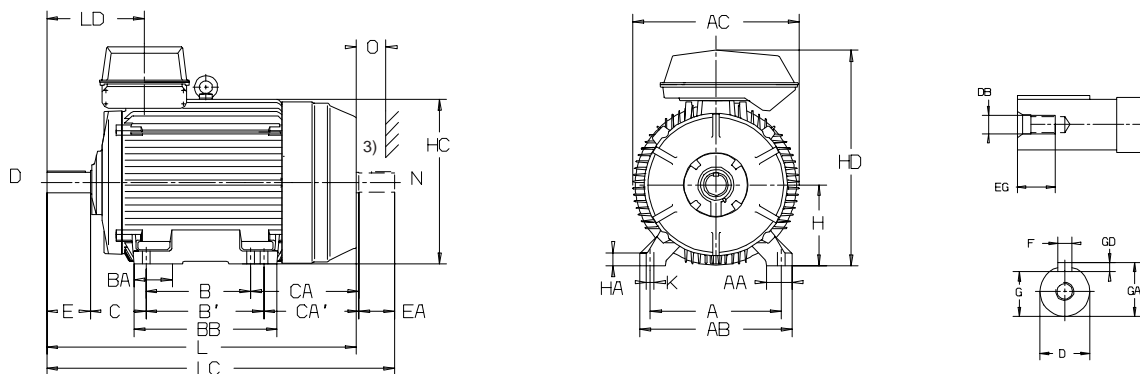
# Dimension drawing

# M2BA 280 - 315

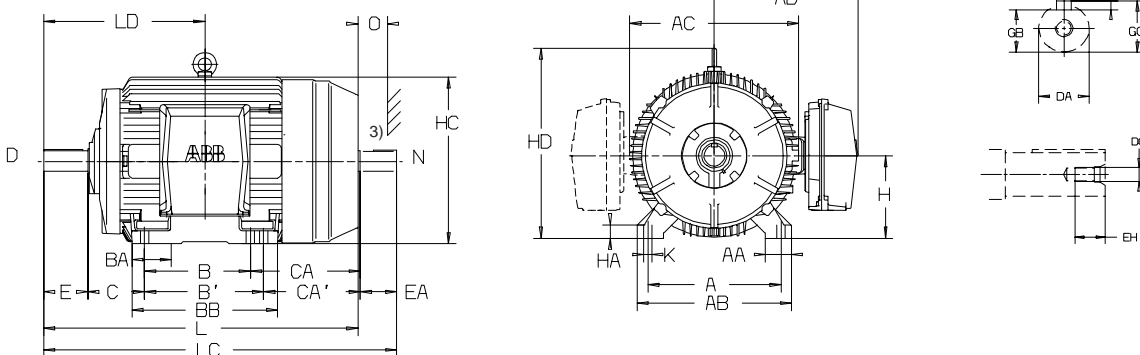
Foot-mounted; IM B3 (IM1001), IM B6 (IM1051), IM B7 (IM1061),  
IM B8 (IM1071), IM V5 (IM1011), IM V6 (IM1031)

Cast iron motors

## Terminal box top-mounted



## Terminal box side-mounted



Type M2BA	Poles	A	AA	AB	AC	AD	B	B'	BA	BB	C	CA	CA'	D	DA	DB	DC	E	EA	EG	EH
	<sup>2)</sup>	b	n	f	g	a		m	e	w1	w2		d	d1	d6	d7	l	l1			
280 SM	2	457	85	530	572	487	368	419	146	506	190	400	349	65	60	M20	M20	140	140	40	40
	4-12	457	85	530	572	487	368	419	146	506	190	400	349	75	65	M20	M20	140	140	40	40
315 SM	2	508	100	590	645	549	406	457	163	556	216	420	369	65	60	M20	M20	140	140	40	40
	4-12	508	100	590	645	549	406	457	163	556	216	420	369	80	75	M20	M20	170	140	40	40
315 ML	2	508	100	590	645	549	457	508	163	607	216	420	369	65	60	M20	M20	140	140	40	40
	4-12	508	100	590	645	549	457	508	163	607	216	420	369	90	75	M24	M20	170	140	48	40

Type M2BA	Poles	F	FA	G	GA	GB	GC	GD	GF	H	HA	HC	HD	HD	K	L	LC	LD	LD	O
	<sup>2)</sup>	u	u1	t	t1					<sup>1)</sup> h	c		top-m. p	side-m. p	s	k	k1	top-m.	side-m.	<sup>4)</sup>
280 SM	2	18	18	58	69	53	64	11	11	280	40	566	745	660	24	1088	1238	332	540	100
	4-12	20	18	67.5	79.5	58	69	12	11	280	40	566	745	660	24	1088	1238	332	540	100
315 SM	2	18	18	58	69	53	64	11	11	315	50	638	840	732	30	1173	1322	351	584	115
	4-12	22	20	71	85	67.5	79.5	14	12	315	50	638	840	732	30	1203	1352	381	614	115
315 ML	2	18	18	58	69	53	64	11	11	315	50	638	840	732	30	1224	1373	351	609	115
	4-12	25	20	81	95	67.5	79.5	14	12	315	50	638	840	732	30	1254	1403	381	639	115

<sup>1)</sup> Tolerances:  
D, DA ISO m6  
H ISO 0, - 1.0

<sup>2)</sup> Dimensions for 2-pole motors also valid for 2/4- and 2-4 -pole two-speed motors.  
<sup>3)</sup> Second shaft end on request.  
<sup>4)</sup> Cooling distance.

Dimensions: capital letters acc. to IEC 72, small letters acc. to DIN 42673.

Dimensions for terminal boxes on page 51, for protection roofs on page 54.

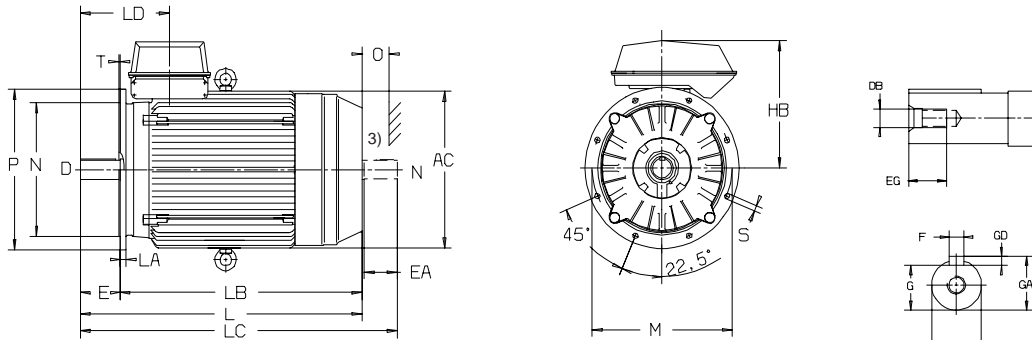
# Dimension drawing

# M2BA 280 - 400

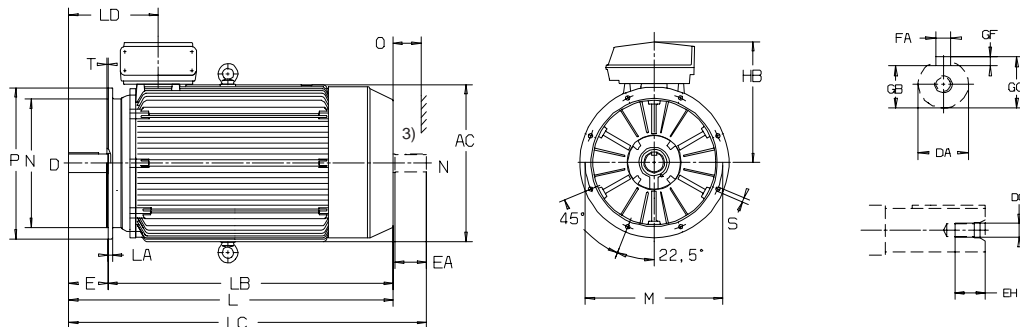
Flange-mounted;  
IM B5 (IM3001), IM V1 (IM3011), IM V3 (IM3031)

Cast iron motors

M2BA 280-315



M2BA 355-400



Type M2BA	Poles	AC	D	DA	DB	DC	E	EA	EG	EH	F	FA	G	GA	GB	GC	GD	GF
	<sup>2)</sup>	g	d	d1	d6	d7	l	l1			u	u1		t		t1		
280 SM_	2	572	65	60	M20	M20	140	140	40	40	18	18	58	69	53	64	11	11
	4-12	572	75	65	M20	M20	140	140	40	40	20	18	67.5	79.5	58	69	12	11
315 SM_	2	645	65	60	M20	M20	140	140	40	40	18	18	58	69	53	64	11	11
	4-12	645	80	75	M20	M20	170	140	40	40	22	20	71	85	67.5	79.5	14	12
315 ML_	2	645	65	60	M20	M20	140	140	40	40	18	18	58	69	53	64	11	11
	4-12	645	90	75	M24	M20	170	140	48	40	25	20	81	95	67.5	79.5	14	12
355 S_	2	746	70	70	M20	M20	140	140	40	40	20	20	62.5	74.5	62.5	74.5	12	12
	4-12	746	100	90	M24	M24	210	170	48	48	28	25	90	106	81	95	16	14
355 SM_	2	746	70	70	M20	M20	140	140	40	40	20	20	62.5	74.5	62.5	74.5	12	12
	4-12	746	100	90	M24	M24	210	170	48	48	28	25	90	106	81	95	16	14
355 ML_	2	746	70	70	M20	M20	140	140	40	40	20	20	62.5	74.5	62.5	74.5	12	12
	4-12	746	100	90	M24	M24	210	170	48	48	28	25	90	106	81	95	16	14
400 LK_	2	824	80	75	M20	M20	170	140	40	40	22	20	71	85	67.5	79.5	14	12
	4-12	824	100	90	M24	M24	210	170	48	48	28	25	90	106	81	95	16	14

Type M2BA	Poles	HB	L	LA	LB	LC	LD	M	N	O	P	S	T
	<sup>2)</sup>		k	c1		k1		e	b1	<sup>4)</sup>	a1	s1	f1
280 SM_	2	465	1088	22	938	1238	332	500	450	100	550	18	5
	4-12	465	1088	22	938	1238	332	500	450	100	550	18	5
315 SM_	2	525	1173	25	1033	1322	351	600	550	115	660	23	6
	4-12	525	1203	25	1033	1352	381	600	550	115	660	23	6
315 ML_	2	525	1224	25	1084	1373	351	600	550	115	660	23	6
	4-12	525	1254	25	1084	1403	381	600	550	115	660	23	6
355 S_	2	600	1344	25	1204	1494	397	740	680	130	800	23	6
	4-12	600	1414	25	1204	1594	467	740	680	130	800	23	6
355 SM_	2	600	1396	25	1256	1546	397	740	680	130	800	23	6
	4-12	600	1466	25	1256	1646	467	740	680	130	800	23	6
355 ML_	2	600	1501	25	1361	1651	397	740	680	130	800	23	6
	4-12	600	1571	25	1361	1751	467	740	680	130	800	23	6
400 LK_	2	640	1678	25	1538	1828	432	740	680	150	800	23	6
	4-12	640	1748	25	1538	1928	505	740	680	150	800	23	6

<sup>1)</sup> Tolerances:  
D, DA ISO m6  
N ISO j6 (280 SM\_)  
ISO js6 (315\_) <sup>2)</sup> Dimensions for 2-pole motors also valid for 2/4- and 2-4 -pole two-speed motors.  
<sup>3)</sup> Second shaft end on request.  
<sup>4)</sup> Cooling distance.

Dimensions: capital letters acc. to IEC 72, small letters acc. to DIN 42673.

Dimensions for terminal boxes page 51, for protection roof page 54.

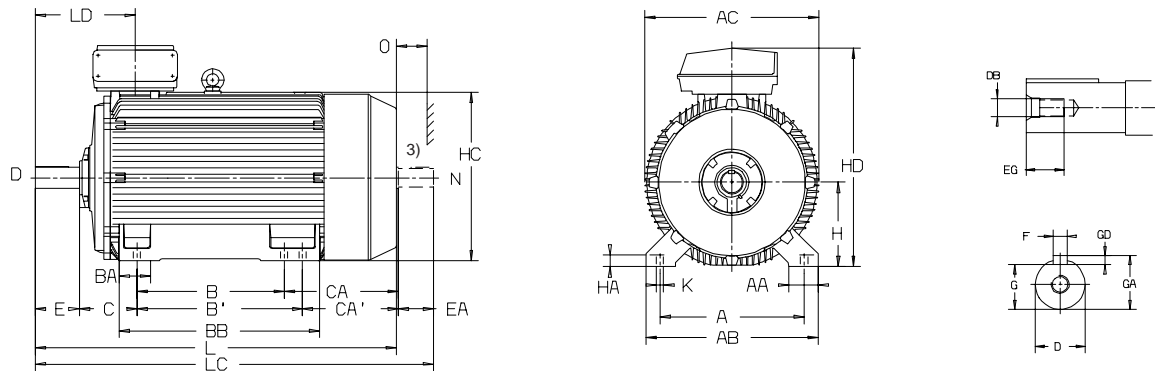
# Dimension drawing

# M2BA 355 - 400

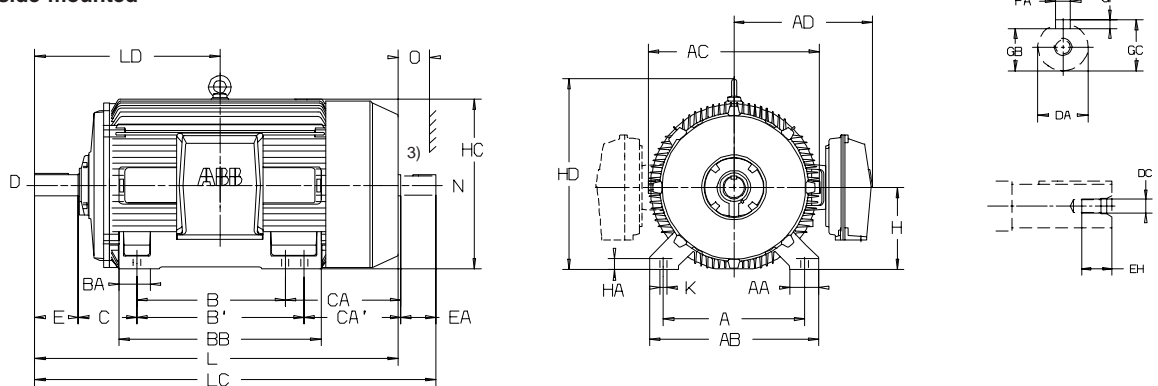
Foot-mounted; IM B3 (IM1001), IM B6 (IM1051), IM B7 (IM1061),  
IM B8 (IM1071), IM V5 (IM1011), IM V6 (IM1031)

Cast iron motors

## Terminal box top-mounted



## Terminal box side-mounted



Type M2BA	Poles	A	AA	AB	AC	AD	B	B'	BA	BB	C	CA	CA'	D	DA	DB	DC	E	EA	EG	EH
	<sup>2)</sup>	b	n	f	g		a		m	e	w1	w2		d	d1	d6	d7	l	l1		
355 S <sub>-</sub>	2	610	120	700	740	627	500	-	161	662	254	460	-	70	70	M20	M20	140	140	40	40
	4-12	610	120	700	740	627	500	-	161	662	254	460	-	100	90	M24	M24	210	170	48	48
355 SM <sub>-</sub>	2	610	120	700	740	627	500	560	161	722	254	512	452	70	70	M20	M20	140	140	40	40
	4-12	610	120	700	740	627	500	560	161	722	254	512	452	100	90	M24	M24	210	170	48	48
355 ML <sub>-</sub>	2	610	120	700	740	627	560	630	161	792	254	557	487	70	70	M20	M20	140	140	40	40
	4-12	610	120	700	740	627	560	630	161	792	254	557	487	100	90	M24	M24	210	170	48	48
400 M <sub>-</sub>	2	686	120	775	746	627	630	-	130	737	280	461	-	70	70	M20	M20	140	140	40	40
	4-12	686	120	775	746	627	630	-	130	737	280	461	-	100	90	M24	M24	210	170	48	48
400 LK <sub>-</sub>	2	686	140	820	824	667	710	800	170	967	280	558	468	80	75	M20	M20	170	140	40	40
	4-12	686	140	820	824	667	710	800	170	967	280	558	468	100	90	M24	M24	210	170	48	48

Type M2BA	Poles	F	FA	G	GA	GB	GC	GD	GF	H	HA	HC	HD	HD	K	L	LC	LD	LD	O
	<sup>2)</sup>	u	u1		t		t1			<sup>1)</sup> h	c		top-m. p	side-m. p	s	k	k1	top-m.	LD	side-m. <sup>4)</sup>
355 S <sub>-</sub>	2	20	20	62.5	74.5	62.5	74.5	12	12	355	55	725	955	838	35	1344	1494	397	652	130
	4-12	28	25	90	106	81	95	16	14	355	55	725	955	838	35	1414	1594	467	722	130
355 SM <sub>-</sub>	2	20	20	62.5	74.5	62.5	74.5	12	12	355	55	725	955	838	35	1396	1546	397	678	130
	4-12	28	25	90	106	81	95	16	14	355	55	725	955	838	35	1466	1646	467	748	130
355 ML <sub>-</sub>	2	20	20	62.5	74.5	62.5	74.5	12	12	355	55	725	955	838	35	1501	1651	397	730	130
	4-12	28	25	90	106	81	95	16	14	355	55	725	955	838	35	1571	1751	467	800	130
400 M <sub>-</sub>	2	20	20	62.5	74.5	62.5	74.5	12	12	400	60	773	1005	886	35	1501	1651	397	730	130
	4-12	28	25	90	106	81	95	16	14	400	60	773	1005	886	35	1571	1751	467	800	130
400 LK <sub>-</sub>	2	22	20	71	85	67.5	79.5	14	12	400	55	812	1040	945	35	1708	1858	432	819	150
	4-12	28	25	90	106	81	95	16	14	400	55	812	1040	945	35	1748	1928	502	889	150

<sup>1)</sup> Tolerances:  
D, DA ISO m6  
H ISO 0, - 1.0

<sup>2)</sup> Dimensions for 2-pole motors also valid for 2/4- and 2-4 -pole two-speed motors.  
<sup>3)</sup> Second shaft end on request.  
<sup>4)</sup> Cooling distance.

Dimensions: capital letters acc. to IEC 72, small letters acc. to DIN 42673.

Dimensions for terminal boxes on page 51, for protection roofs on page 54.