

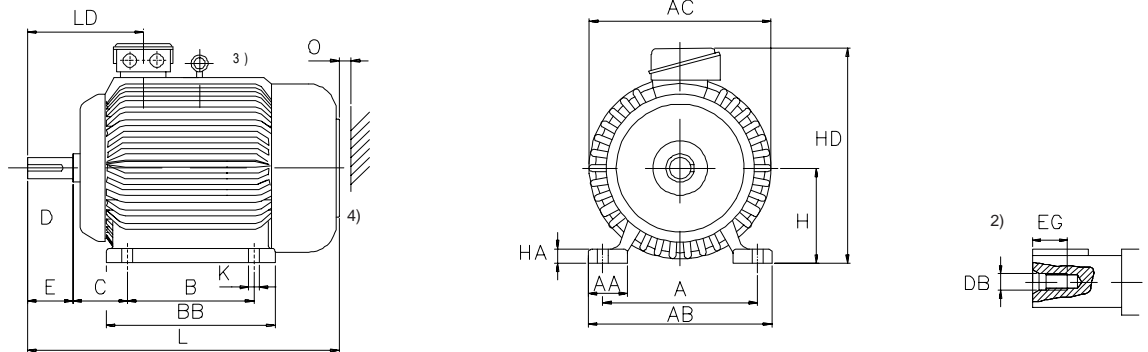
Dimension drawing

QU 71 - 132

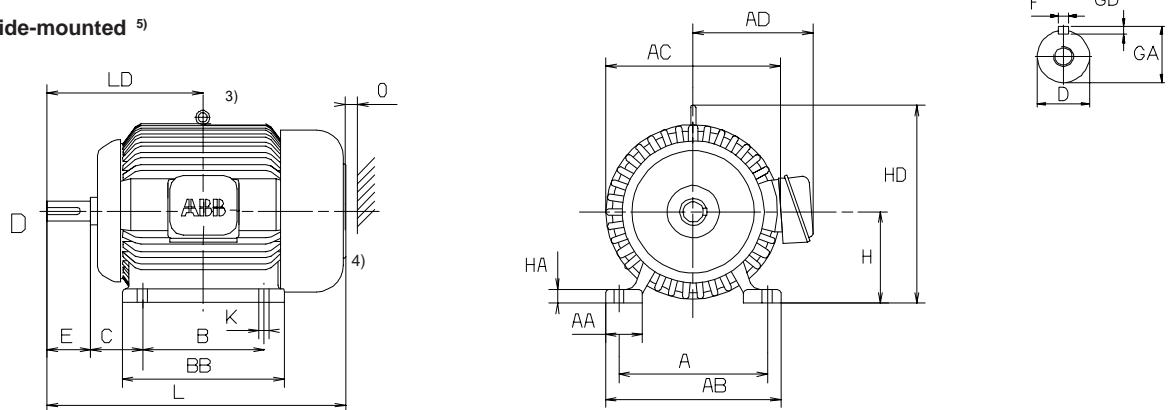
Foot-mounted; IM B3 (IM1001), IM B6 (IM1051), IM B7 (IM1061),
IM B8 (IM1071), IM V5 (IM1011), IM V6 (IM1031)

Cast iron motors

Terminal box top-mounted



Terminal box side-mounted ⁵⁾



Type QU	Poles	A	AA	AB	AC	AD	B	BB	C	D	DB	E	EG
		b	n	f	g		a	e	w1	d	d6	l	
71 M	2-6	112	30	145	137	-	90	110	45	14	M5	30	12.5
80 M	2-6	125	35	160	160	145	100	135	50	19	M6	40	16
90 S	2-6	140	35	175	175	150	100	140	56	24	M8	50	19
90 L	2-6	140	35	175	175	150	125	165	56	24	M8	50	19
100 L	2-6	160	40	200	205	175	140	180	63	28	M10	60	22
112 M	2-6	190	50	235	224	180	140	185	70	28	M10	60	22
132 S	2-6	216	55	270	264	200	140	205	89	38	M12	80	28
132 M	2-6	216	55	270	264	200	178	243	89	38	M12	80	28

Type QU	Poles	F	GA	GD	H	HA	HD top-m.	HD side-m.	K	L	LD top-m.	LD side-m.	O
		u	t		h	c	p	p	s	k	top-m.	side-m.	6)
71 M	2-6	5	16	5	71	10	190	-	7	250	101	-	15
80 M	2-6	6	21.5	6	80	12	220	162	10	282	116	140	20
90 S	2-6	8	27	7	90	12	235	185	10	310	128	156	25
90 L	2-6	8	27	7	90	12	235	185	10	335	128	168.5	25
100 L	2-6	8	31	7	100	12	270	240	12	380	138	193	25
112 M	2-6	8	31	7	112	15	290	260	12	395	144	200	25
132 S	2-6	10	41	8	132	18	330	300	12	462	172	239	25
132 M	2-6	10	41	8	132	18	330	300	12	500	172	258	25

1) Tolerances:
D ISO j6 (QU 71)
ISO k6 (QU 80-132)
keys acc. DIN 6885, sheet 1

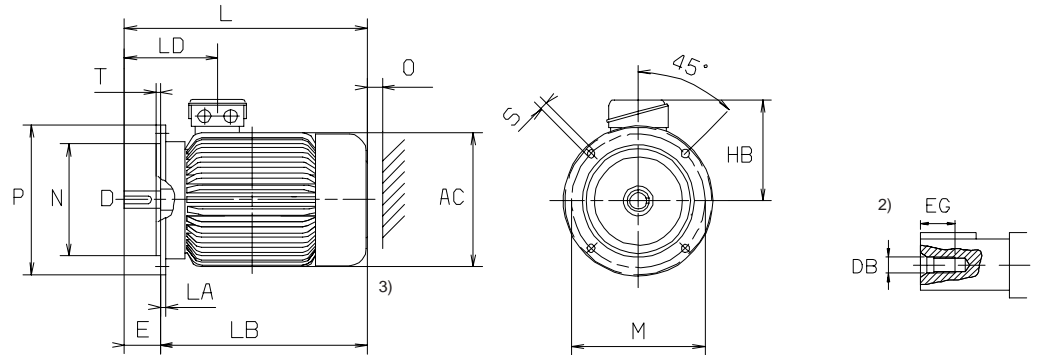
2) In the shaft end the motors have a centre hole with protective sinking and thread acc. to DIN 332, sheet 2.
3) Motors from frame size 100 with lifting eye bolts.
4) Second shaft end on request.
5) Frame size 71 only with top-mounted terminal box.
6) Cooling distance.

Dimensions: capital letters acc. to IEC 72, small letters acc. to DIN 42673.
Dimensions for terminal boxes on page 50, for protection roofs on page 54.

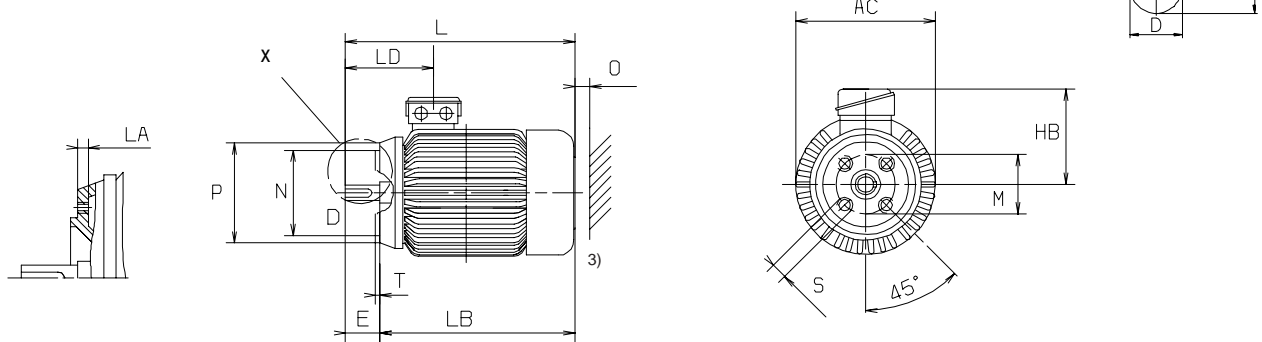
Flange-mounted; IM B5 (IM3001), IM V1 (IM3011), IM V3 (IM3031)
and IM B14 (IM3601), IM V18 (IM3611), IM V19 (IM3631)

Cast iron motors

Flange-mounted motor, large flange
IM B5 (IM3001), IM V1 (IM3011), IM V3 (IM3031)



Flange-mounted motor, small flange
IM B14 (IM3601), IM V18 (IM3611), IM V19 (IM3631)



Type QU	Poles	AC	D ¹⁾	DB	E	EG	F	GA	GD	HB	L	LD	O ⁴⁾
		g	d	d6	l		u	t			k		
71 M	2-6	137	14	M5	30	12.5	5	16	5	115	254	101	15

IM B5 (IM3001), IM V1 (IM3011), IM V3 (IM3031)

Type QU	Flange size	LA	LB	M	N ¹⁾	P	S	T
	c1			e1	b1	a1	s1	f1
71 M	C60	9	220	130	110	160	10	3.5

IM B14 (IM3601), IM V18 (IM3611), IM V19 (IM3631)

Type QU	Flange size	LA	LB	M	N ¹⁾	P	S	T
	c1			e1	b1	a1	s1	f1
71 M	C105 C140	8 10	224 224	85 115	70 95	105 140	M6 M8	2.5 3.5

¹⁾ Tolerances:
D ISO j6
keys acc. to DIN 6885, sheet 1
N ISO j6

²⁾ In the shaft end the motors have a centre hole with protective sinking and thread acc. to DIN 332 sheet 2.
³⁾ Second shaft end on request.
⁴⁾ Cooling distance.

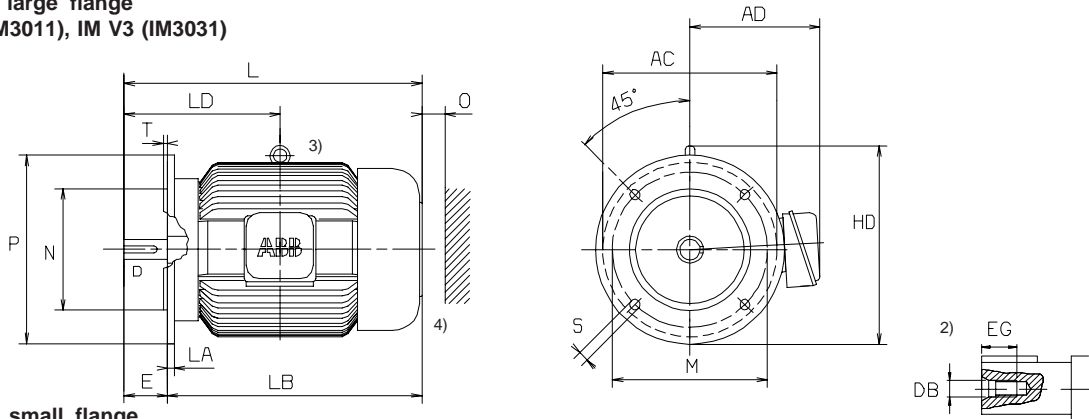
Dimensions: capital letters acc. to IEC 72, small letters acc. to DIN 42673.

Dimensions for terminal boxes page 50, for protection roofs page 54.

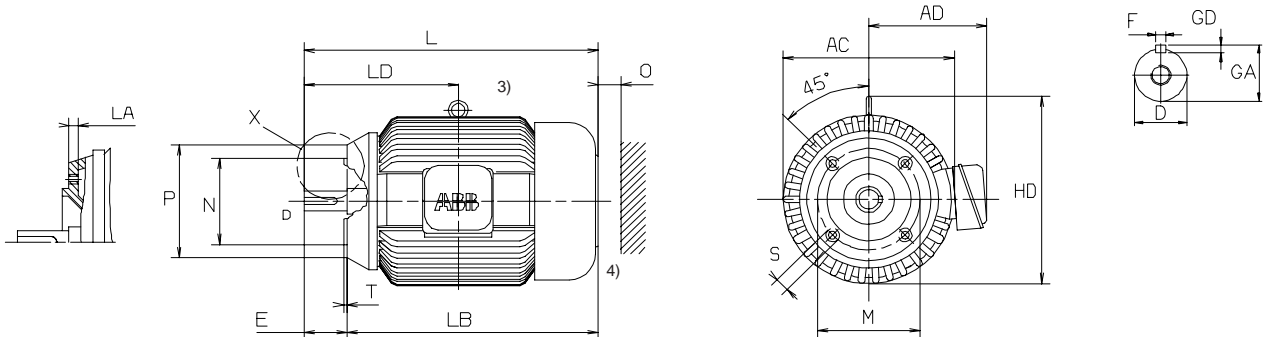
Flange-mounted; IM B5 (IM3001), IM V1 (IM3011), IM V3 (IM3031)
and IM B14 (IM3601), IM V18 (IM3611), IM V19 (IM3631)

Cast iron motors

Flange-mounted motor, large flange
IM B5 (IM3001), IM V1 (IM3011), IM V3 (IM3031)



Flange-mounted motor, small flange
IM B14 (IM3601), IM V18 (IM3611), IM V19 (IM3631)



Type QU	Poles	AC	AD	D ₁₎	DB	E	EG	F	GA	GD	L	LB	LD	O ₅₎
		g		d	d6	l		u	t		k			
80 M	2-6	160	145	19	M6	40	16	6	21.5	6	290	250	140	20
90 S	2-6	180	150	24	M8	50	19	8	27	7	320	270	156	25
90 L	2-6	180	150	24	M8	50	19	8	27	7	345	295	168.5	25
100 L	2-6	205	175	28	M10	60	22	8	31	7	280	320	193	25
112 M	2-6	224	180	28	M10	60	22	8	31	7	395	335	200	25
132 S	2-6	264	200	38	M12	80	28	10	41	8	462	382	239	25
132 M	2-6	264	200	38	M12	80	28	10	41	8	500	420	258	25

IM B5 (IM3001), IM V1 (IM3011), IM V3 (IM3031)

Type QU	Flange size	HD	LA	M	N ₁₎	P	S	T
		p	c1	e1	b1	a1	s1	f1
80 M	C200	200	10	165	130	200	12	3.5
90 S	C200	200	10	165	130	200	12	3.5
90 L	C200	200	10	165	130	200	12	3.5
100 L	C250	262	11	215	180	250	15	4
112 M	C250	272	11	215	180	250	15	4
132 S	C300	318	12	265	230	300	15	4
132 M	C300	318	12	265	230	300	15	4

IM B14 (IM3601), IM V18 (IM3611), IM V19 (IM3631)

Type QU	Flange size	HD	LA	M	N ₁₎	P	S	T
		p	c1	e1	b1	a1	s1	f1
80 M	C120	172	8	100	80	120	M6	3
	C160	172	10	130	110	160	M8	3.5
90 S	C140	185	10	115	95	140	M8	3
	C160	185	10	130	110	160	M8	3.5
90 L	C140	185	10	115	95	140	M8	3
	C160	185	10	130	110	160	M8	3.5
100 L	C160	250	10	130	110	160	M8	3.5
	C200	250	12	165	130	200	M10	3.5
112 M	C160	272	10	130	110	160	M8	3.5
	C200	272	12	165	130	200	M10	3.5

1) Tolerances:
D ISO j6
keys acc. to DIN 6885, sheet 1
N ISO j6

2) In the shaft end the motors have a centre hole with protective sinking and thread acc. to DIN 332 sheet 2.
3) Motors from frame size 100 with lifting eye bolts.
4) Second shaft end on request.
5) Cooling distance.

Dimensions: capital letters acc. to IEC72, small letters acc. to DIN 42673.

Dimensions for terminal boxes page 50, for protection roofs page 54.