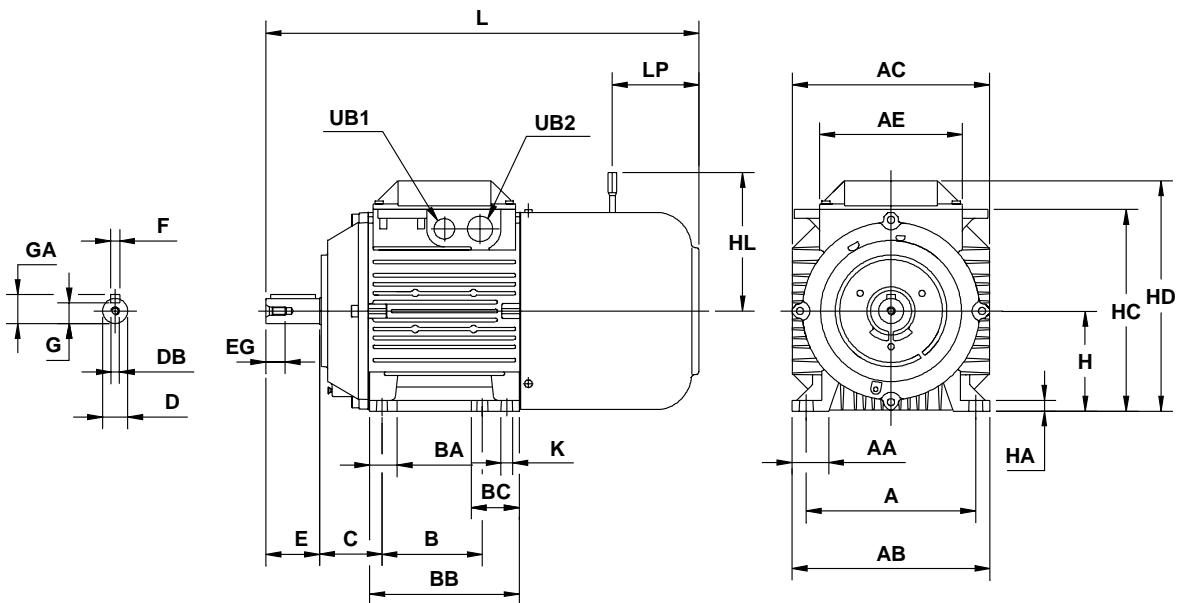


Dimension drawings

Brake motors 63 - 160

IM 1001, IM B3



IM 1001, IM B3

	Type	A	AA	AB	AC	B	BA	BB	BC	C	D ¹⁾	DB	E	EG	F ¹⁾	GA	H ¹⁾	HA	HC	HD	HL	K	L	LP	UB1	UB2
M3VRF/S	63	100	26	120	123	80	21	96	21	40	11	M4	23	10	4	12,5	63	10	-	180	-	7	270	-	M16	Pg 11
	71	112	24	136	139	90	31	110	31	45	14	M5	30	13	5	16	71	9	-	176	112	7	316	74	M20	Pg 16
	80	125	28	154	156	100	34	125	34	50	19	M6	40	16	6	21,5	80	10	-	190	120	10	360	69	M20	Pg 16
M3ARF/S	90 S	140	27	170	178	100	30	150	54	56	24	M8	50	19	8	27	90	10	179	212	160	10	395	70	M20	M20
	90 L	140	27	170	178	125	30	150	54	56	24	M8	50	19	8	27	90	10	179	212	160	10	395	70	M20	M20
	100 L	160	32	197	198	140	34	172	34	63	28	M10	60	22	8	31	100	12	199	236	177	12	453	105	M20	M20
	112 M	190	41	222	221	140	31	168	31	70	28	M10	60	22	8	31	112	12	226	258	184	12	487	105	M20	M25
	132 S	216	47	262	261	140	40	212	76	89	38	M12	80	28	10	41	132	14	264	295,5	225	12	606	120	M20	M25
	132 M	216	47	262	261	178	40	212	76	89	38	M12	80	28	10	41	132	14	264	295,5	225	12	606	120	M20	M25
	160 M	254	56	310	314	210	55	287,5	86	108	42	M16	110	36	12	45	160	20	325	368,5	253	15	781,5	131	M40	M40
	160 L	254	56	310	314	254	55	287,5	86	108	42	M16	110	36	12	45	160	20	325	368,5	253	15	781,5	131	M40	M40

1) Tolerances

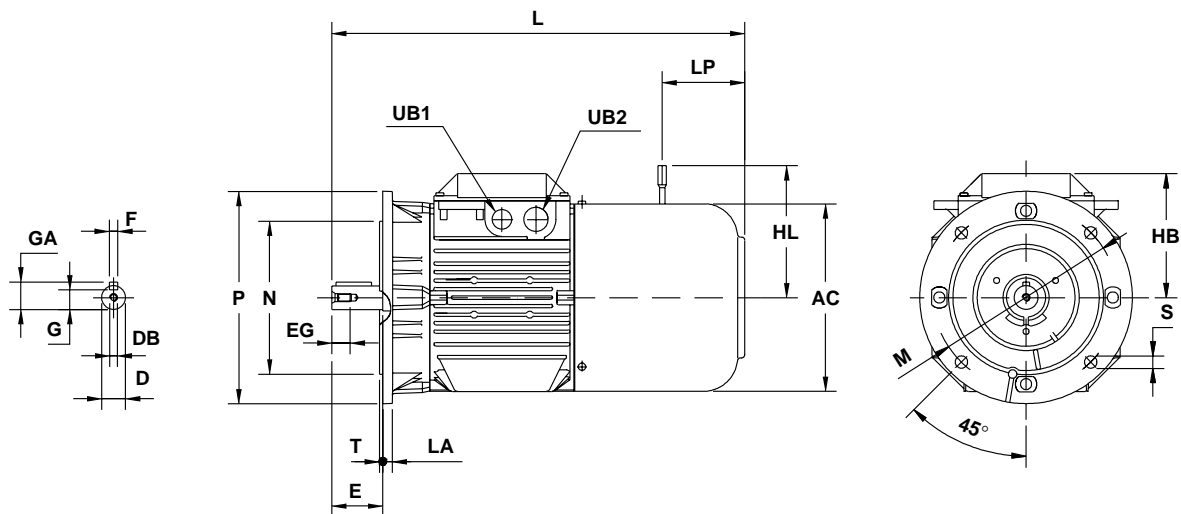
D ≤ 28 \varnothing ISO j6
D 38+42 \varnothing ISO k6
F ISO h9
H +0 -0,5

Dimensions in mm are subject to modification without prior notice

Dimension drawings

Brake motors 63 - 160

IM 3001, IM 3011, IM B5, IM V1



IM 3001, IM B5

Type	AC	D ¹⁾	DB	E	EG	F ¹⁾	GA	HB	HL	L	LP	UB1	UB2
M3VRF/S 63	123	11	M4	23	10	4	12,5	117	-	270	-	M16	Pg 11
M3VRF/S 71	139	14	M5	30	13	5	16	105	112	316	74	M20	Pg 16
M3VRF/S 80	156	19	M6	40	16	6	21,5	110	120	360	69	M20	Pg 16
M3ARF/S 90 S, L	178	24	M8	50	19	8	27	122	160	395	70	M20	M20
M3ARF/S 100 L	198	28	M10	60	22	8	31	136	177	453	105	M20	M20
M3ARF/S 112 M	221	28	M10	60	22	8	31	146	184	487	105	M20	M25
M3ARF/S 132 S, M	261	38	M12	80	28	10	41	164	225	606	120	M20	M25
M3ARF/S 160 M	314	42	M16	110	36	12	45	208,5	253	781,5	131	M40	M40
M3ARF/S 160 L	314	42	M16	110	36	12	45	208,5	253	781,5	131	M40	M40

- 1) Tolerances
D ≤ 28 ø ISO j6
D 38-42 ø ISO k6
F ISO h9
Dimensions in mm are subject to modification without notice.

- 3) Clearance holes for bolt
4) For M3ARF/S 90, the M=85 flange ring can only be supplied for threaded holes.
5) All flanges can be supplied with clearance or threaded holes for the specified bolts.
6) Optional for frame size 160.

One-piece flange

IM 3001, IM B5

Motor type	IEC Flange	LA	M	N	P	S ³⁾	T
M3VRF/S 63	FF115	10	115	95	140	M8	3
M3VRF/S 71	FF130	10	130	110	160	M8	3,5
M3VRF/S 80	FF165	12	165	130	200	M10	3,5
M3ARF/S 90	FF165	11	165	130	200	M10	3,5
M3ARF/S 100	FF215	11	215	180	250	M12	4
M3ARF/S 112	FF215	11	215	180	250	M12	4
M3ARF/S 132	FF265	12	265	230	300	M12	4
M3ARF/S ⁶⁾ 160	FF 265	12	265	230	300	M12	4
M3ARF/S 160	FF300	20	300	250	350	M16	5

One-piece flange

IM 3601, IM B14

Motor type	IEC Flange	LA	M	N	P	S	T
M3VRF/S 63	FT75	10	75	60	90	M5	2,5
M3VRF/S 71	FT85	10	85	70	105	M6	2,5
M3VRF/S 80	FT100	10	100	80	120	M6	3

Other flanges available (2-pieces)

IM 3001, IM B5 or IM 3601, IM B14

Motor type	IEC Flange	M	N	P	S ⁵⁾
M3VRF/S 71-80	FF/FT 85	85	70	105	M6
M3ARF/S 90	FT 85	85	70	105	M6 ⁴⁾
M3VRF/S 71-80 & M3ARF/S 90	FF/FT 100	100	80	120	M6
M3VRF/S 71-80 & M3ARF/S 90	FF/FT 115	115	95	140	M8
M3VRF/S 71-80 & M3ARF/S 90-100-112	FF/FT 130	130	110	160	M8
M3VRF/S 71-80 & M3ARF/S 100-112	FF/FT 165	165	130	200	M10
M3ARF/S 132	FF/FT 215	215	180	250	M12