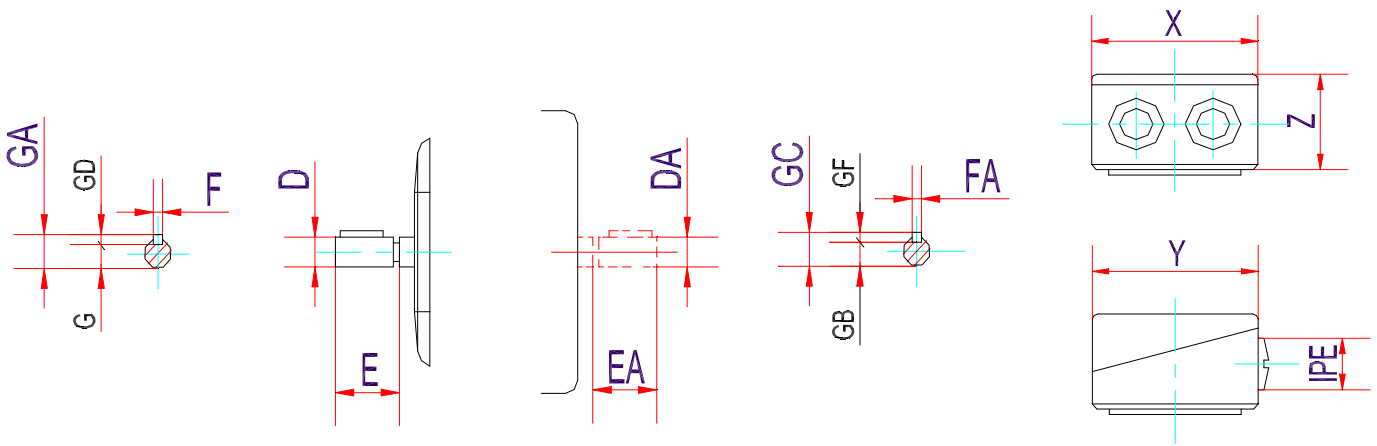


Type	Poles	dimensions in mm				Abmessungen in mm				dimensions en mm				dimensiones en mm						
		A	AA	AB	AC	B	BB	C	CA	D	DA	E	EA	H	HA	HD	K	L	LC	LD
DMA2 56 K / G	2 / 4	90	25	110	108	71	90	36	70	9j6	9j6	20	20	56	10	154	6	192	217	61
DMA2 63 K / G		100	30	120		80	105	40	72	11j6	11j6	23	23	63		161	7	210	238	
DMA2 71 K / G	2 / 4 / 6	112		136	148	90	106	45	80	14j6	14j6	30	30	71		197		240	275	72
DMA2 80 K / G	2 / 4 / 6 / 8	125	41	150	157	100	130	50	110	19j6	19j6	40	40	80		222	10	295	340	81,5
DMA2 90 S		140	46	168	174		165	56	139	24j6	24j6	50	50	90	12	250		340	385	
DMA2 90 L						125			114											
DMA2 100 L / LX		160	45	190	195	140	176	63	117	28j6	28j6	60	60	100		265	12	375	440	92
DMA2 112 M		190	53	220	220		180	70	130					112		300		395	460	94
DMA2 132 S / SX		216	60	252	256		224	89	201	38k6	38k6	80	80	132	15	340		505	590	106
DMA2 132 M(X,Y)						178			162											

DMA2 56 - 132 : SHAFTDIMENSIONS

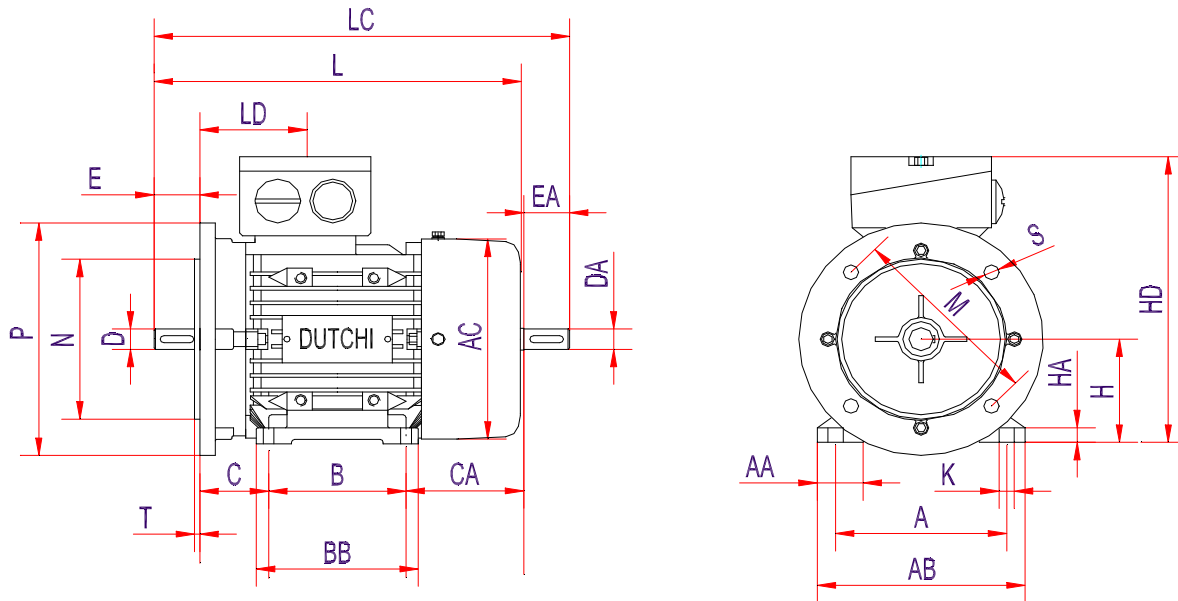


shaft DE 56-132

shaft NDE 56-132

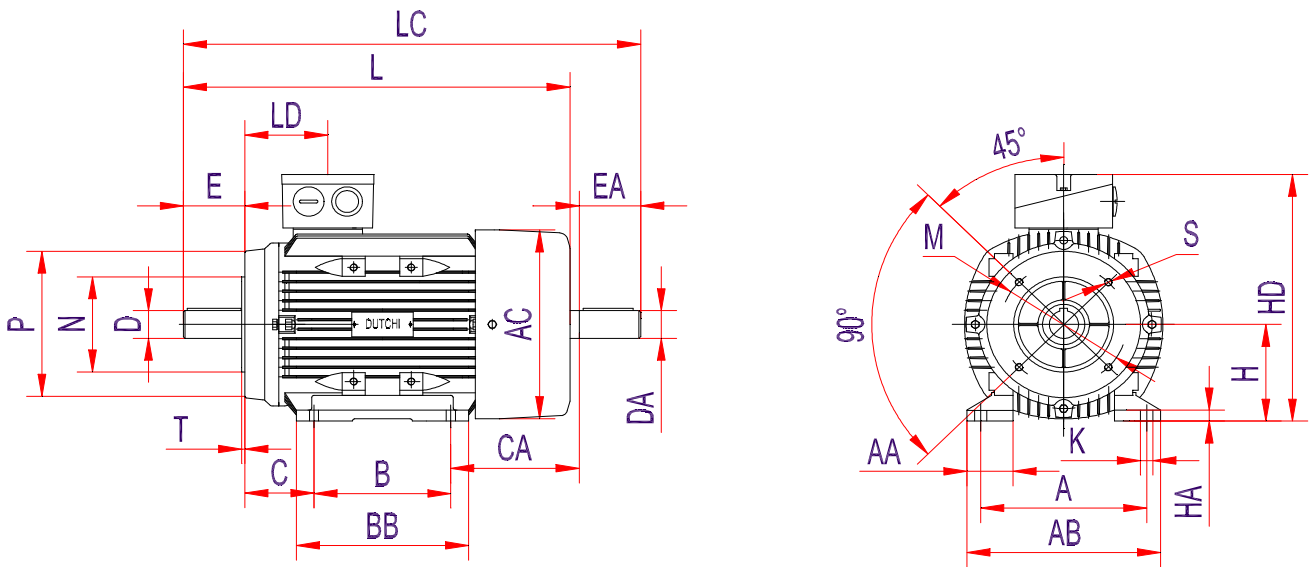
terminal box 56-132

Type	Poles	dimensions in mm		Abmessungen in mm		dimensions en mm		dimensiones en mm												
		D	E	F	G	GA	GD	CB-DE	DA	EA	FA	GB	GC	GF	CB-NDE	X	Y	Z	IPE	eye bolt
DMA2 56 K / G	2 / 4	9j6	20	3	7,2	10,2	3	M3	9j6	20	3	7,2	10,2	3	M3	87	87	46	2 x M20*1,5	-
DMA2 63 K / G		11j6	23	4	8,5	12,5	4	M4	11j6	23	4	8,5	12,5	4	M4					
DMA2 71 K / G	2 / 4 / 6	14j6	30	5	11,0	16,0	5	M5	14j6	30	5	11,0	16,0	5	M5					
DMA2 80 K / G	2 / 4 / 6 / 8	19j6	40	6	15,5	21,5	6	M6	19j6	40	6	15,5	21,5	6	M6	103	105	65	2 x M25*1,5	
DMA2 90 S		24j6	50	8	20	27	7	M8	24j6	50	8	20	27	7	M8					
DMA2 90 L																				
DMA2 100 L / LX		28j6	60		24	31		M10	28j6	60		24	31		M10					M8
DMA2 112 M																119	125	65	2 x M32*1,5	
DMA2 132 S / SX		38k6	80	10	33	41	8	M12	38k6	80	10	33	41	8	M12					M10
DMA2 132 M / MX																				



dimensions en mm		dimensiones en mm																							
Type	Poles	A	AA	AB	AC	B	BB	C	D	E	H	HA	HD	CA	DA	EA	K	L	LC	LD	M	N	P	S	T
DMA2 56 K/G	2 / 4	90	25	110	108	71	90	36	9j6	20	56	10	154	65	9j6	20	6	192	217	61	100	80	120	4Ø7	3
DMA2 63 K/G		100	30	120		80	105	40	11j6	23	63		161	67	11j6	23	7	210	238		115	95	140	4Ø10	
DMA2 71 K/G	2 / 4 / 6	112		136	148	90	106	45	14j6	30	71		197	77	14j6	30		240	275	72	130	110	160		3,5
DMA2 80 K/G	2 / 4 / 6 / 8	125	41	150	157	100	130	50	19j6	40	80		222	98	19j6	40	10	295	340	81,5	165	130	200	4Ø12	
DMA2 90 S		140	46	168	174		165	56	24j6	50	90	12	250	111	24j6	50		340	385						
DMA2 90 L						125																			
DMA2 100 L/LX		160	45	190	195	140	176	63	28j6	60	100		265	120	28j6	60	12	375	440	92	215	180	250	4Ø15	4
DMA2 112 M		190	53	220	220		180	70			112		300	134				395	460	94					
DMA2 132 S/SX		216	60	252	256		224	89	38k6	80	132	15	340	170	38k6	80		505	590	106	265	230	300		
DMA2 132 M(X,Y)						178																			

DMA2 56 - 132 : B34 (small & large)

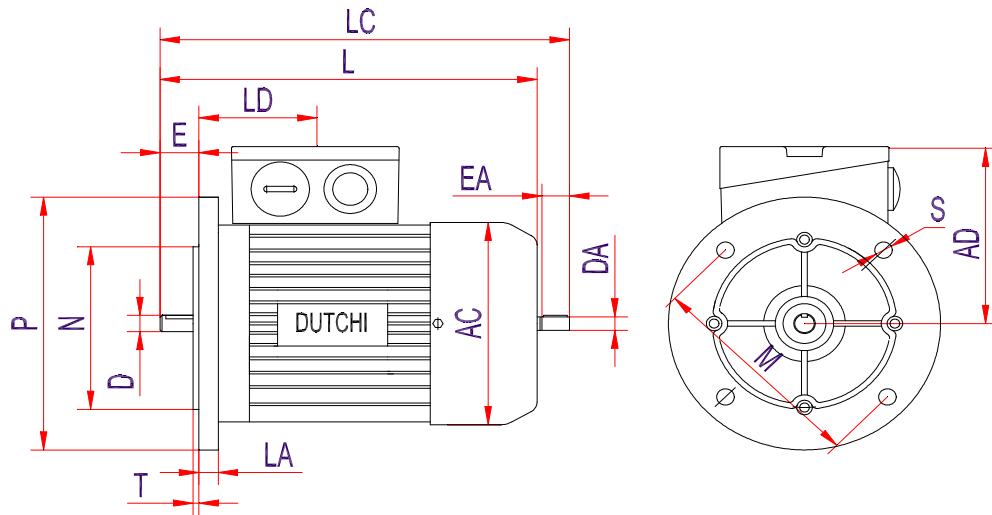


Dimensions: AA, AB, CA, HA see DMA2: B3

dimensions en mm		dimensiones en mm																								
Type	Poles	A	AC	B	BB	C	D	E	DA	EA	H	HD	K	L	LC	LD	B34 small				B34 large					
																	M	N	P	S	T	M	N	P	S	T
DMA2 56 K/G	2 / 4	90	108	71	90	36	9j6	20	9j6	20	56	154	6	192	217	61	65	50	80	M5	2,5	85	70	105	M6	2,5
DMA2 63 K/G		100		80	105	40	11j6	23	11j6	23	63	161	7	210	238		75	60	90			100	80	120		3
DMA2 71 K/G	2 / 4 / 6	112	148	90	106	45	14j6	30	14j6	30	71	197		240	275	72	85	70	105	M6		115	95	140	M8	
DMA2 80 K/G	2 / 4 / 6 / 8	125	157	100	130	50	19j6	40	19j6	40	80	222	10	295	340	81,5	100	80	120		3	130	110	160		3,5
DMA2 90 S		140	174		165	56	24j6	50	24j6	50	90	250		340	385		115	95	140	M8						
DMA2 90 L				125																						
DMA2 100 L/LX		160	195	140	176	63	28j6	60	28j6	60	100	265	12	375	440	92	130	110	160		3,5	165	130j6	200	M10	
DMA2 112 M		190	220		180	70					112	300		395	460	94										
DMA2 132 S/SX		216	256		224	89	38k6	80	38k6	80	132	340		505	590	106	165	130	200	M10		215	180j6	250	M12	4
DMA2 132 M(X,Y)				178																						

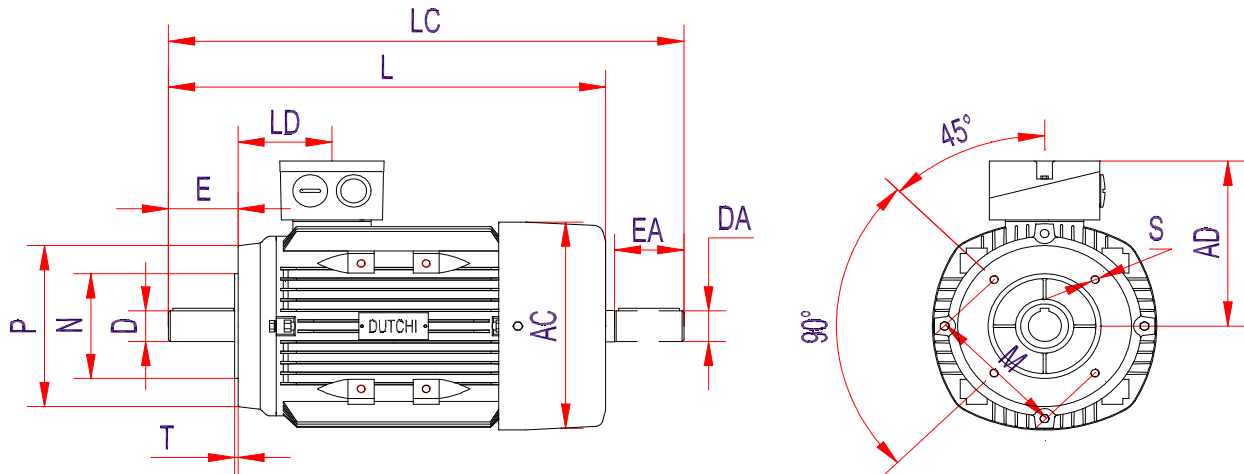
B14 large flange 100,112 and 132 in cast iron

DMA2 56 - 132 : IM B5



dimensions in mm		Abmessungen im mm						dimensions en mm				dimensiones en mm				
Type	Poles	D	E	AC	AD	L	LA	LC	LD	DA	EA	M	N	P	S	T
DMA2 56 K/G	2 / 4	9j6	20	108	98	192	9	217	61	9j6	20	100	80	120	4Ø7	3
DMA2 63 K/G		11j6	23			210	238									
DMA2 71 K/G	2 / 4 / 6	14j6	30	148	126	240	10	275	72	14j6	30	130	110	160	4Ø10	3,5
DMA2 80 K/G		19j6	40	157	142	295	12	340								
DMA2 90 S	2 / 4 / 6 / 8	24j6	50	174	160	340		385		24j6	50					
DMA2 90 L																
DMA2 100 L/LX		28j6	60	195	165	375	13	440	92	28j6	60	215	180	250	4Ø15	4
DMA2 112 M	220			188	395	14	460	94								
DMA2 132 S/SX		38k6	80	256	208	505		590	106	38k6	80	265	230	300		
DMA2 132 M(X,Y)																

DMA2 56 - 132 : B14 (small & large)



dimensions in mm		Abmessungen im mm						dimensions en mm				dimensiones en mm								
Type	Poles	D	E	AC	AD	L	LC	LD	DA	EA	B34 small				B34 large					
											M	N	P	S	T	M	N	P	S	T
DMA2 56 K/G	2 / 4	9j6	20	108	98	192	217	61	9j6	20	65	50	80	M5	2,5	85	70j6	105	M6	2,5
DMA2 63 K/G		11j6	23			210	238		11j6	23	75	60	90			100	80j6	120		3
DMA2 71 K/G	2 / 4 / 6	14j6	30	148	126	240	275	72	14j6	30	85	70	105	M6	3	115	95j6	140	M8	3,5
DMA2 80 K/G		19j6	40	157	142	295	340	81,5	19j6	40	100	80	120			130	110j6	160		
DMA2 90 S	2 / 4 / 6 / 8	24j6	50	174	160	340	385		24j6	50	115	95	140	M8						
DMA2 90 L																				
DMA2 100 L/LX		28j6	60	195	165	375	440	92	28j6	60	130	110	160		3,5	165	130j6	200	M10	
DMA2 112 M	220			188	395	460	94													
DMA2 132 S/SX		38k6	80	256	208	505	590	106	38k6	80	165	130	200	M10		215	180j6	250	M12	4
DMA2 132 M(X,Y)																				

B14 large flange 100,112 and 132 in cast iron