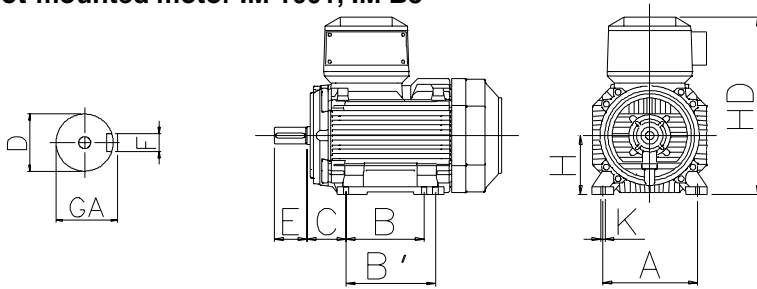


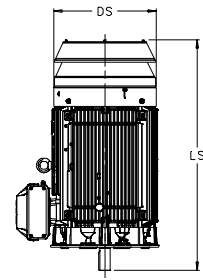
Dimension drawings

M3000 Flameproof motors

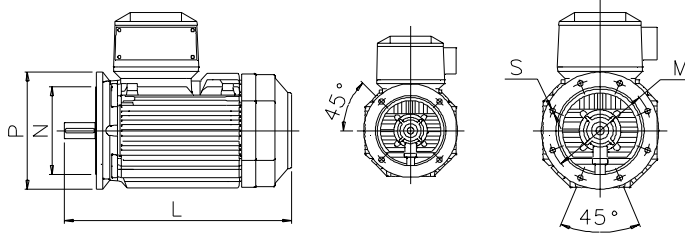
Foot-mounted motor IM 1001, IM B3



Motor with protection cover



Flange-mounted motor IM 3001, IM B5



Sizes 80-200

Sizes 225-400

IM 1001, IM B3 AND IM 3001, IM B5						IM 1001, IM B3						IM 3001, IM B5				Protective roof									
Motor size	D poles		GA poles		F poles		E poles		L max poles	A	B	B'	C	HD		K	H	M	N	P	S	DS	LS	poles	
	2	4-8	2	4-8	2	4-8	2	4-8						M2JA	M2KA										2
80	19	19	21.5	21.5	6	6	40	40	287	287	125	100	-	50	251.5	250	10	80	165	130	200	12	150	306	306
90 S	24	24	27	27	8	8	50	50	336	336	140	100	125	56	276.5	275	10	90	165	130	200	12	170	360	360
90 L	24	24	27	27	8	8	50	50	336	336	140	100	125	56	276.5	275	10	90	165	130	200	12	170	360	360
100	28	28	31	31	8	8	60	60	399	399	160	140	-	63	295	294	10	100	215	180	250	15	188	444	444
112	28	28	31	31	8	8	60	60	419	419	190	140	-	70	307.5	306	12	112	215	180	250	15	188	444	444
132 S	38	38	41	41	10	10	80	80	512	512	216	140	178	89	352.5	351	12	132	265	230	300	15	255	548	548
132 M	38	38	41	41	10	10	80	80	512	512	216	140	178	89	352.5	351	12	132	265	230	300	15	255	548	548
160	42	42	45	45	12	12	110	110	711	711	254	210	254	108	447	388	14.5	160	300	250	350	18.5	328	756	756
180	48	48	51.5	51.5	14	14	110	110	706	706	279	241	279	121	485	426	14.5	180	300	250	350	18.5	359	756	756
200	55	55	59	59	16	16	110	110	774	774	318	267	305	133	616	573	18.5	200	350	300	400	18.5	414	844	844
225	55	60	59	64	16	18	110	140	841	871	356	286	311	149	663	620	18.5	225	400	350	450	18.5	462	921	951
250	60	65	64	69	18	18	140	140	875	875	406	311	349	168	726	683	24	250	500	450	550	18.5	506	965	965
280 SM_	65	75	69	79.5	18	20	140	140	1090	1090	457	368	419	190	862	768	24	280	500	450	550	18	555	1190	1190
315 SM_	65	80	69	85	18	22	140	170	1176	1206	508	406	457	216	929	858	30	315	600	550	660	23	624	1290	1320
315 ML_	65	90	69	95	18	25	140	170	1287	1317	508	457	508	216	929	858	30	315	600	550	660	23	624	1401	1431
355 S_	70	100	74.5	106	20	28	140	210	1344	1414	610	500	-	254	1150	985	35	355	740	680	800	23	590	1480	1550
355 SM_	70	100	74.5	106	20	28	140	210	1396	1466	610	500	560	254	1150	985	35	355	740	680	800	23	590	1530	1600
355 ML_	70	100	74.5	106	20	28	140	210	1501	1571	610	560	630	254	1150	985	35	355	740	680	800	23	590	1635	1705
400 M_	70	100	74.5	106	20	28	140	210	1501	1571	686	630	-	280	1195	1035	35	400	-	-	-	-	590	1635	1705
400 LK_	80	100	85	106	22	28	170	210	1708	1748	686	710	800	280	1240	1070	35	400	740	680	800	23	700	1860	1900

IM 3601, IM B14 - Available flange alternatives ; see also variant codes.

Flange size	Variant code	Flange dimensions				Motor size M2JA/M2KA					S = Standard flange R = Special flange NA = Not possible
		P	M	N	S	80	90	100	112	132	
FT100	258	120	100	80	M6	S	NA	NA	NA	NA	NA
FT115	260	140	115	95	M8	R	S	NA	NA	NA	NA
FT130	229	160	130	110	M8	R	R	S	S	NA	NA
FT165	236	200	165	130	M10	NA	NA	NA	NA	S	NA
FT215	246	250	215	180	M12	NA	NA	R	R	R	NA
FT265	256	300	265	230	M12	NA	NA	NA	NA	R	NA

Tolerances:

- A, B ± 0,8
- D, DA ISO k6 < Ø 50mm
- ISO m6 > Ø 50mm
- F, FA ISO h9
- H +0 -0,5
- N ISO j6
- C, CA ± 0,8

Above table gives the main dimensions in mm.

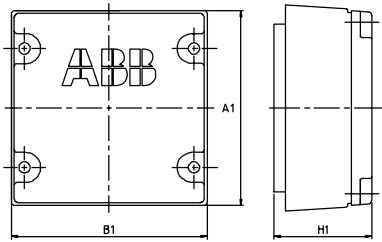
For detailed drawings please check our web-pages
'www.abb.com/motors&drives' or contact ABB.

Dimension drawings

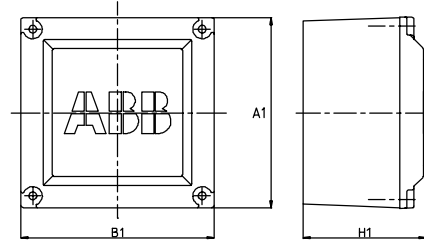
Flameproof motors

Terminal boxes, standard with 6 terminals

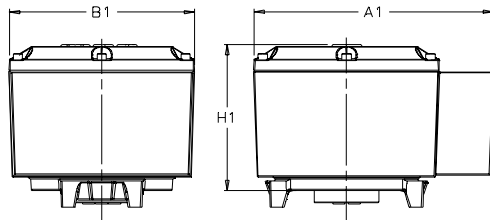
Motor sizes 80-132



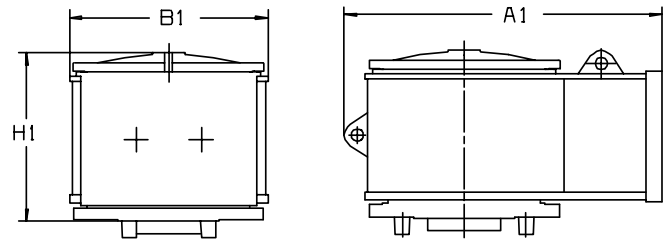
Motor sizes 160 - 250



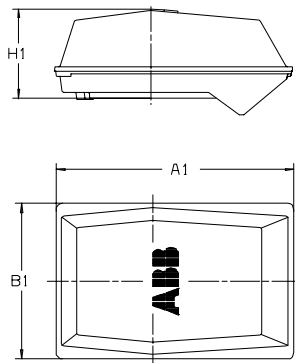
EEx d - motor sizes 280 - 315



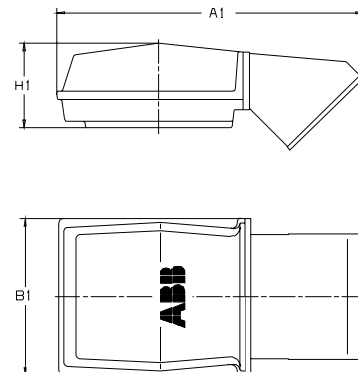
EEx d - motor sizes 355 - 400



EEx de - motor sizes 280 - 315



EEx de - motor sizes 355 - 400



Motor size	Terminal box	A1	B1	H1
EEx d:				
80 - 132		164	162.5	68
160 - 180		234	234	111
200 - 250		339	290	226
280 - 315	M3JP/M2JA 142/2	465	370	260
355 - 400	M2JA 162/2 + Adapter MPMM-ZL1	790	490	420

For motor dimensions please see dimension drawings on earlier pages.

Motor size	Terminal box	A1	B1	H1
EEx de:				
80 - 132		175.5	174	70.5
160 - 180		234	234	51.5
200 - 250		352	319	183.5
280 - 315	M3KP/M2KA 142/2	536	350	197
355 - 400	M2KA 162/2 + Adapter MPMM-ZL1	787	410	226

Note: Smallest 355 sizes may be equipped with the 142/2 terminal box, for detail information contact us.