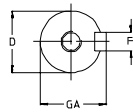
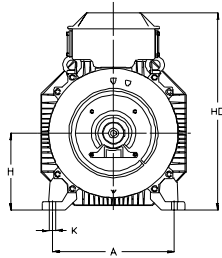
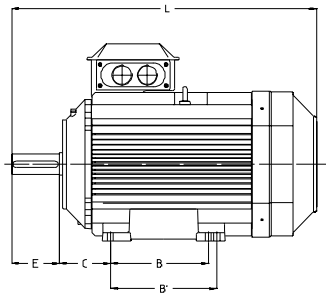


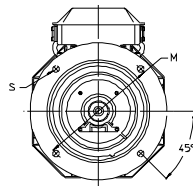
Dimension drawings

M3000 Non-sparking motors, aluminium frame

Foot-mounted motor IM 1001, IM B3



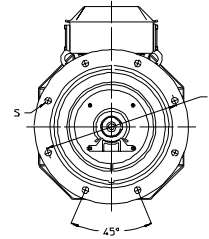
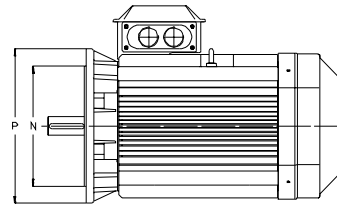
Shaft extension



Flanges

Sizes 90-200

Flange-mounted motor IM 3001, IM B5



Sizes 225-250

Motor size	IM 1001, IM B3 AND IM 3001, IM B5						IM 1001, IM B3						IM 3001, IM B5								
	D poles		GA poles		F poles		E poles		L max poles		A	B	B'	C	HD	K	H	M	N	P	S
	2	4-8	2	4-8	2	4-8	2	4-8	2	4-8											
90 S	24	24	27	27	8	8	50	50	295	295	140	100	—	56	212	10	90	165	130	200	12
90 L	24	24	27	27	8	8	50	50	320	320	140	125	—	56	212	10	90	165	130	200	12
100 L	28	28	31	31	8	8	60	60	358.5	358.5	160	140	—	63	236	12	100	215	180	250	15
112 M	28	28	31	8	8	8	60	60	361	361	190	140	—	70	258	12	112	215	180	250	14.5
132	38	41	41	41	10	10	80	80	447	447	216	140	178	89	295.5	12	132	265	230	300	14.5
160¹⁾	42	42	45	45	12	12	110	110	602.5	602.5	254	210	254	108	370	15	160	300	250	350	19
160²⁾	42	42	45	45	12	12	110	110	643.5	643.5	254	210	254	108	370	15	160	300	250	350	19
180³⁾	48	51.5	51.5	51.5	14	14	110	110	680	680	279	241	279	121	405	15	180	300	250	350	19
180⁴⁾	48	51.5	51.5	51.5	14	14	110	110	700.5	700.5	279	241	279	121	405	15	180	300	250	350	19
200 ML	55	55	59	59	16	16	110	110	773	773	318	267	305	133	496.5	18	200	350	300	400	19
225 SM	55	60	59	64	16	18	110	110	835	865	356	286	311	149	542	18	225	400	350	450	19
250 SM	60	65	64	69	18	18	140	140	872	872	406	311	349	168	590	22	250	500	450	550	19

IM 3601, IM B14

Motor size	HB	LA	M	N	P	S	T
90	122	14	115	95	140	M8	3
100	136	16	130	110	160	M8	3.5
112	146	20	130	130	160	M8	3.5
132	163.5	18	165	165	200	M10	3.5

Tolerances:

A, B	± 0.8
D, DA	ISO k6 < Ø 50mm ISO m6 > Ø 50mm
F, FA	ISO h9
H	+0 -0.5
N	ISO j6
C, CA	± 0.8

¹⁾ MA2, M2, L2, LB2, M4, L4, LB4, M6, L6, M28, M8

²⁾ LB6, L8, LB8

³⁾ M2, LB2, M4, L6, L8

⁴⁾ L4, LB4, LB6, LB8

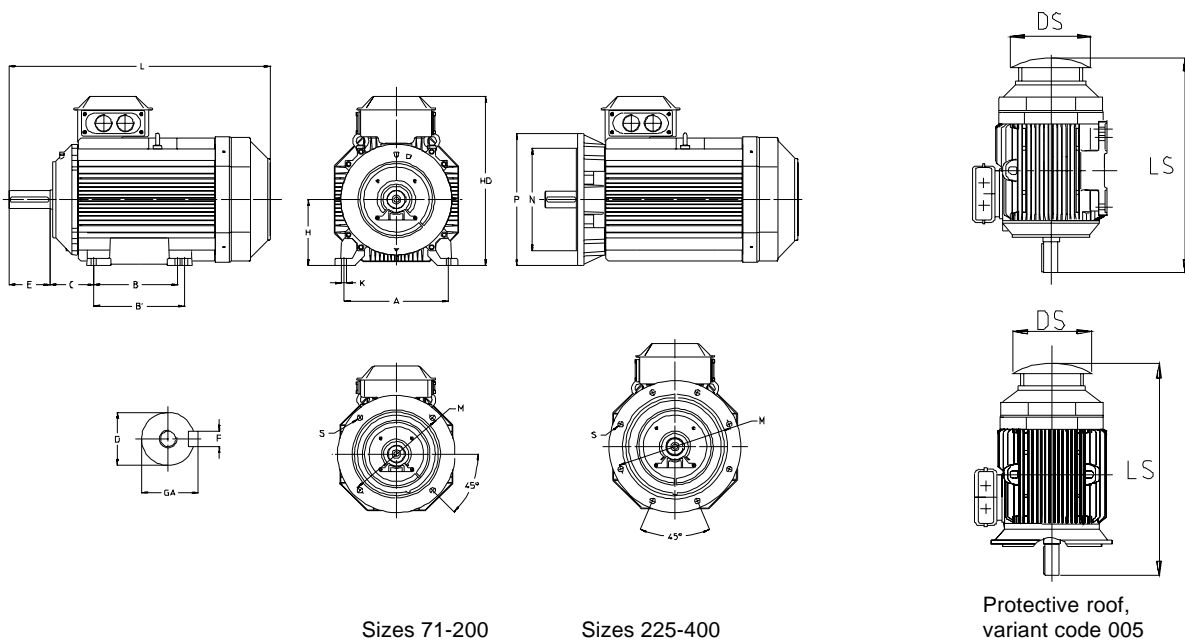
Above table gives the main dimensions in mm.

For detailed drawings please check our web-pages
'www.abb.com/motors&drives' or contact ABB.

Dimension drawings

M3000 Non-sparking motors, cast iron frame

Foot-mounted motor IM 1001, IM B3 Flange-mounted motor IM 3001, IM B5



Sizes 71-200

Sizes 225-400

Protective roof, variant code 005

Motor size	IM 1001, IM B3 AND IM 3001, IM B5						IM 1001, IM B3						IM 3001, IM B5				Protective roof							
	D poles 2 4-8		GA poles 2 4-8		F poles 2 4-8		E poles 2 4-8		L max poles 2 4-8		A	B	B'	C	HD	K	H	M	N	P	S	DS	LS poles 2 4-8	
71	14	14	16	16	5	5	30	30	250	250	112	90	-	45	190	7	71	130	110	160	10	140	275	275
80	19	19	21.5	21.5	6	6	40	40	282	282	125	100	-	50	220	10	80	165	130	200	12	155	320	320
90 S	24	24	27	27	8	8	50	50	310	310	140	100	-	56	235	10	90	165	130	200	12	175	345	345
90 L	24	24	27	27	8	8	50	50	335	335	140	125	-	56	235	10	90	165	130	200	12	175	370	370
100	28	28	31	31	8	8	60	60	380	380	160	140	-	63	270	12	100	215	180	250	15	195	410	410
112	28	28	31	31	8	8	60	60	395	395	190	140	-	70	290	12	112	215	180	250	15	220	425	425
132 S	38	38	41	41	10	10	80	80	462	462	216	140	-	89	330	12	132	265	230	300	15	260	490	490
132 M	38	38	41	41	10	10	80	80	500	500	216	178	-	89	330	12	132	265	230	300	15	260	530	530
160	42	42	45	45	12	12	110	110	711	711	254	210	254	108	388	14.5	160	300	250	350	18.5	328	756	756
180	48	48	51.5	51.5	14	14	110	110	706	706	279	241	279	121	426	14.5	180	300	250	350	18.5	359	756	756
200	55	55	59	59	16	16	110	110	774	774	318	267	305	133	536	18.5	200	350	300	400	18.5	414	844	844
225	55	60	59	64	16	18	110	140	841	871	356	286	311	149	583	18.5	225	400	350	450	18.5	462	921	951
250	60	65	64	69	18	18	140	140	875	875	406	311	349	168	646	24	250	500	450	550	18.5	506	965	965
280 SM	65	75	69	79.5	18	20	140	140	1088	1088	457	368	419	190	762	24	280	500	450	550	18	555	1190	1190
315 SM	65	80	69	85	18	22	140	170	1174	1204	508	406	457	216	852	30	315	600	550	660	23	624	1290	1320
315 ML	65	90	69	95	18	25	140	170	1285	1315	508	457	508	216	852	30	315	600	550	660	23	624	1401	1431
355 S	70	100	74.5	106	20	28	140	210	1344	1414	610	500	-	254	955	35	355	740	680	800	23	720	1476	1546
355 SM	70	100	74.5	106	20	28	140	210	1396	1466	610	500	560	254	955	35	355	740	680	800	23	720	1528	1703
355 ML	70	100	74.5	106	20	28	140	210	1501	1571	610	560	630	254	955	35	355	740	680	800	23	720	1633	1703
400 M	70	100	74.5	106	20	28	140	210	1501	1571	686	630	-	280	1005	35	400	-	-	-	-	810	1860	1900
400 LK	80	100	85.0	106	22	28	170	210	1708	1748	686	710	800	280	1040	35	400	740	680	800	23	810	1860	1900

IM 3601, IM B14

Motor size	Flange size	P	M	N	S	T
71	C105	105	85	70	M6	2.5
71	C140	140	115	95	M8	3
80	C120	120	100	80	M6	3
80	C160	160	130	110	M8	3.5
90	C140	140	115	95	M8	3
90	C160	160	130	110	M8	3.5
100, 112	C160	160	130	110	M8	3.5
100, 112	C200	200	165	130	M10	3.5

Tolerances:

A, B	± 0,8	H	+0 -0.5
D, DA	ISO k6 < Ø 50mm	N	ISO j6
	ISO m6 > Ø 50mm	C, CA	± 0.8
F, FA	ISO h9		

Above table gives the main dimensions in mm.

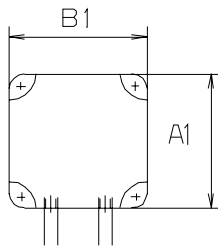
For detailed drawings please check our web-pages 'www.abb.com/motors&drives' or contact ABB.

Dimension drawings

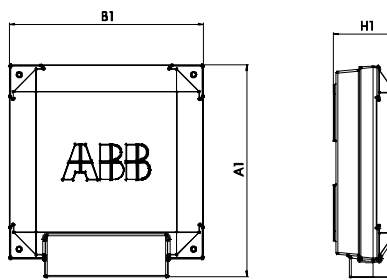
Cast iron frame

Terminal boxes, standard design with 6 terminals

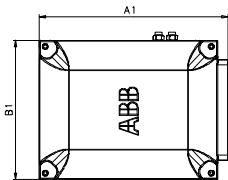
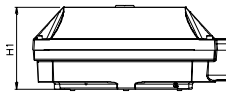
Motor sizes 71 - 132



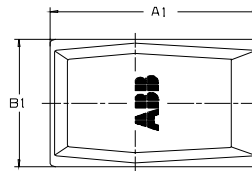
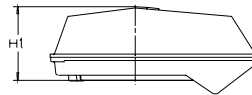
Motor sizes 160 - 250



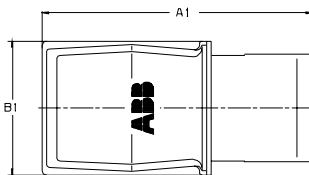
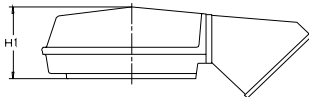
Motor sizes 280-315, top- and side-mounted
210/1, 370/1



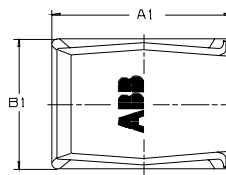
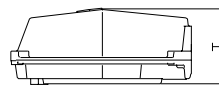
Motor sizes 355-400 top-mounted:
142/1, 142/2



Motor sizes 355-400, top-mounted
162/1, 162/2 + adaptor MPMM-ZL1



Motor sizes 355-400 side-mounted:
142/5, 142/10, 162/5, 162/8



Motor size	A1	B1	H1
80 - 90	124	114	58
100 - 132	134	124	68
160 - 180	240	220	79.5
200 - 250	347.5	310	140.9

Terminal box type	Motor size	A1	B1	H1
210/1	280	416	306	177
370/1	315, 355	451	347	200
Top-mounted:				
142/1, 142/2	355-400	536	349	197
162/1, 162/2 + Adaptor MPMM-ZL1	355 - 400	787	410	226
Side-mounted:				
142/5, 142/10				
162/5, 162/8	355 - 400	508	412	226

For motor dimensions please see dimension drawings on earlier pages.